

Distribuidor exclusivo



Catálogo Leche

GENEX™



LÍNEA GENÉTICA DEL HATO

Holando

GENEX™

¿QUÉ ES ICC\$?

ICC es un índice exclusivo GENEX de selección de vacas más productivas, eficientes, rentables y fuertes.



1H011376 TABASCO daughters. Photograph by Luca Noll.

Produciendo vacas que cumplen con estos requisitos, eso es ICC™.

Subíndices incluidos en el índice ICC™

5%

Habilidad de Parto (CABL\$)

10%

Habilidad Lechera

14%

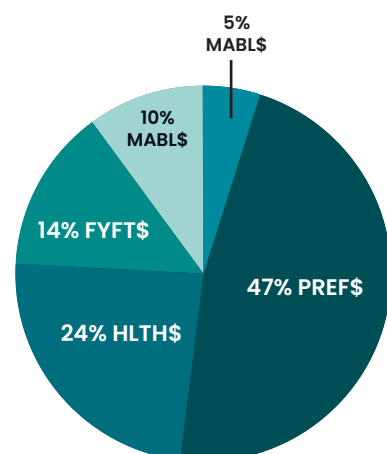
Fertilidad y Desempeño (MABL\$)

24%

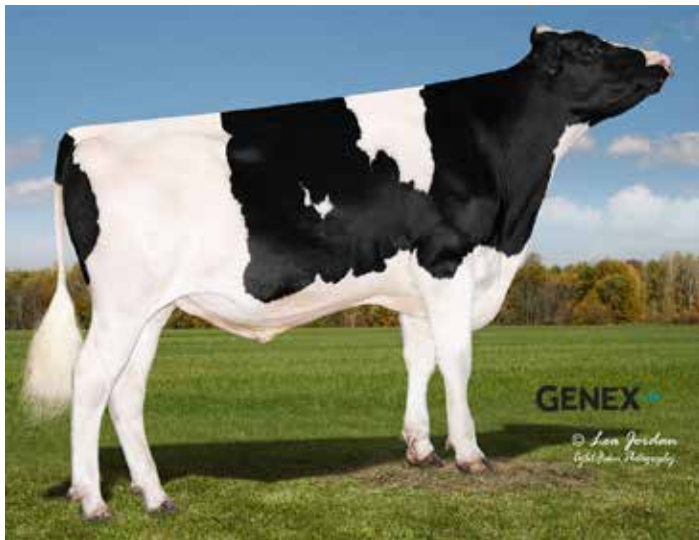
Salud (HLTH\$)

47%

Eficiencia de Producción (PREF\$)



ICC™



EXCITEMENT

001HO16675 - 746422

PEAK EXCITEMENT-ET

HO840M003252198074 | DOB 10/20/2022

Kappa-Casein AB | **Beta-Casein** A1A2

Haplotypes HH1F HH2F HH3F HH4F HH5F HCDF HH6F

HMW0

Genetic Codes TC TD TL TV TY MWF

aAa 564 | **DMS** 561,456 | **EFI** 11.90%

Current Proof USA-202312

CDCB & HA-USA Genetic Evaluations 12/2023

Conformation

Based on - daughters in - herds (78% Rel)

	-2	-1	0	1	2		
PTAT						1.89	
UDC						1.18	
FLC						1.53	
Stature						0.89	Tall
Strength						0.72	Strong
Body Depth						0.54	Deep
Dairy form						1.28	Open
Rump Angle						0.04	Sloped
Thurl Width						1.09	Wide
R. Legs-S View						-0.42	Posty
R. Legs-R View						1.71	Straight
Foot Angle						1.66	Steep
F&L Score						1.57	High
F. Udder Att.						1.42	Strong
R. Udder Ht.						1.81	High
R. Udder Wid.						2.68	Wide
Udder Cleft						-0.54	Weak
Udder Depth						0.45	Shallow
F. Teat Place						0.43	Close
R. Teat Place						0.06	Close
Teat Length						0.46	Long

Pedigree

Sire	PEAK ALTAEXQUISITE-ET
Dam	PEAK ESTELLA-ET
MGS	PINE-TREE-I PURSUIT
MGD	PEAK EMERALD-ET
MGGS	BOMAZ ALTAROBSON-ET
MGGD	ENDCO EXACTA-ET

ICC™

1237

PREF	843	SUST	359	FERT	35
------	-----	------	-----	------	----

TPI 3233 NMS 1216

Production

Milk	+859 Lbs	79% Rel
Protein	+69 Lbs	+0.15%
Fat	+118 Lbs	+0.29%
Feed Saved	+85	44% Rel
RobotX™	109	

Health Traits

Productive Life	+7.0	Daughter Pregnancy Rate	+0.0
Livability	+2.4	Cow Conception Rate	+1.5
Somatic Cell Score	+2.70	Heifer Conception Rate	+2.4
Mastitis	4.8%	Metritis	1.4%
Ketosis	2.4%	Displaced Abomasum	0.8%
Retained Placenta	-0.4%	Milk Fever	-0.2%

Calving Traits

Sire Calving Ease	1.8%	62% Rel	0 Obs
Dtr Calving Ease	1.6%	57% Rel	0 Obs 0 dtr.
Sire Stillbirth	6.0%	59% Rel	0 Obs
Daughter Stillbirth	4.7%	55% Rel	0 Obs 0 dtr.

Sire Fertility

PregCheck™	-
PregCheck+™	-
Sire Conception Rate	-



MAUNO

001HO16397 - 741592

PEAK MAUNO-ET

HO840M003247843563 | DOB 04/24/2022

Kappa-Casein AB | **Beta-Casein** A2A2

Haplotypes HH1F HH2F HH3F HH4F HH5F HCDF HH6F
HMW0

Genetic Codes TC TD TL TR TV TY MWF

aAa 243 | **DMS** 345,456 | **EFI** 11.90%

Current Proof USA-202312

CDCB & HA-USA Genetic Evaluations 12/2023

Conformation

Based on - daughters in - herds (78% Rel)

	-2	-1	0	1	2		
PTAT						1.46	
UDC						1.57	
FLC						0.91	
Stature						0.79	Tall
Strength						0.52	Strong
Body Depth						0.15	Deep
Dairy form						0.98	Open
Rump Angle						0.78	Sloped
Thurl Width						1.27	Wide
R. Legs-S View						-0.92	Posty
R. Legs-R View						0.96	Straight
Foot Angle						1.10	Steep
F&L Score						1.04	High
F. Udder Att.						1.68	Strong
R. Udder Ht.						2.02	High
R. Udder Wid.						2.62	Wide
Udder Cleft						0.26	Strong
Udder Depth						0.93	Shallow
F. Teat Place						1.06	Close
R. Teat Place						0.93	Close
Teat Length						0.28	Long

Pedigree

Sire	PEAK ALTAZEMINI-ET
Dam	PEAK MAUDIE-ET
MGS	PINE-TREE-I PURSUIT
MGD	PINE-TREE MANDOLIN-ET
MGGS	ABS MEDLEY-ET
MGGD	SEAGULL-BAY MY OCTAVIA-ET

ICC™

1138

PREF	773	SUST	343	FERT	22
------	-----	------	-----	------	----

TPI 3126 NMS 1135

Production

Milk	+1709 Lbs	79% Rel
Protein	+65 Lbs	+0.04%
Fat	+102 Lbs	+0.12%
Feed Saved	+73	44% Rel
RobotX™	103	

Health Traits

Productive Life	+6.6	Daughter Pregnancy Rate	+0.1
Livability	+2.4	Cow Conception Rate	+1.6
Somatic Cell Score	+2.63	Heifer Conception Rate	+1.3
Mastitis	2.8%	Metritis	3.5%
Ketosis	2.0%	Displaced Abomasum	0.7%
Retained Placenta	0.3%	Milk Fever	0.0%

Calving Traits

Sire Calving Ease	1.6%	62% Rel	0 Obs
Dtr Calving Ease	1.2%	57% Rel	0 Obs 0 dtr.
Sire Stillbirth	5.2%	59% Rel	0 Obs
Daughter Stillbirth	3.7%	55% Rel	0 Obs 0 dtr.

Sire Fertility

PregCheck™	-
PregCheck+™	-
Sire Conception Rate	-



MOMENTO

001H016144 - 731830

PEAK MOMENTO-ET

HO840M003224956436 | DOB 04/27/2021

Kappa-Casein AA | **Beta-Casein** A2A2

Haplotypes HH1F HH2F HH3F HH4F HH5F HCDF HH6F
HMW0

Genetic Codes TC TD TL TR TV TY MWF

aAa 435 | **DMS** 561,135 | **EFI** 11.90%

Current Proof USA-202312

CDCB & HA-USA Genetic Evaluations 12/2023

Conformation

Based on - daughters in - herds (78% Rel)

	-2	-1	0	1	2		
PTAT						1.39	
UDC						1.68	
FLC						0.46	
Stature						-0.05	Short
Strength						0.24	Strong
Body Depth						0.05	Deep
Dairy form						1.28	Open
Rump Angle						-0.41	High Pins
Thurl Width						0.53	Wide
R. Legs-S View						0.26	Sickle
R. Legs-R View						0.62	Straight
Foot Angle						0.27	Steep
F&L Score						0.37	High
F. Udder Att.						1.64	Strong
R. Udder Ht.						1.85	High
R. Udder Wid.						2.86	Wide
Udder Cleft						0.47	Strong
Udder Depth						0.63	Shallow
F. Teat Place						1.02	Close
R. Teat Place						0.90	Close
Teat Length						-0.81	Short

Pedigree

Sire	PEAK MOLINE-ET
Dam	PEAK MAUDIE-ET
MGS	PINE-TREE-I PURSUIT
MGD	PINE-TREE MANDOLIN-ET
MGGS	ABS MEDLEY-ET
MGGD	SEAGULL-BAY MY OCTAVIA-ET

ICC™

1102

PREF	882	SUST	217	FERT	3
------	-----	------	-----	------	---

TPI 3122 NMS 1130

Production

Milk	+1512 Lbs	81% Rel
Protein	+66 Lbs	+0.06%
Fat	+130 Lbs	+0.24%
Feed Saved	+58	45% Rel
RobotX™	103	

Health Traits

Productive Life	+5.3	Daughter Pregnancy Rate	-1.3
Livability	-0.1	Cow Conception Rate	-0.1
Somatic Cell Score	+2.66	Heifer Conception Rate	+2.6
Mastitis	0.6%	Metritis	0.8%
Ketosis	1.4%	Displaced Abomasum	0.2%
Retained Placenta	0.0%	Milk Fever	0.0%

Calving Traits

Sire Calving Ease	3.1%	77% Rel	51 Obs
Dtr Calving Ease	2.1%	71% Rel	0 Obs 0 dtr.
Sire Stillbirth	6.3%	67% Rel	51 Obs
Daughter Stillbirth	4.5%	65% Rel	0 Obs 0 dtr.

Sire Fertility

PregCheck™	98	76% Rel
PregCheck+™	100	93% Rel
Sire Conception Rate	-0.7	75% Rel

COVEPA

Tru-Test™
DATAMARS

Plataforma de Pesaje Tru-Test

La base para la gestión de su rebaño,
que cabe en su bolsillo.



BARRAS MP600



INDICADOR S3



COVEPA

Speedrite™
DATAMARS

LA LÍNEA **MÁS COMPLETA** EN ELECTRIFICACIÓN





ZINGZANG

001HO16808 - 746426

PEAK ZINGZANG-ET

HO840M003252198109 | DOB 10/26/2022

Kappa-Casein BB | **Beta-Casein** A2A2

Haplotypes HH1F HH2F HH3F HH4F HH5F HCDF HH6F

HMW0

Genetic Codes TC TD TL TV TY MWF

aAa 324 | **DMS** 135,345 | **EFI** 11.60%

Current Proof USA-202312

CDCB & HA-USA Genetic Evaluations 12/2023

Sire: Peak AltaALANZO ET

Conformation

Based on - daughters in - herds (77% Rel)

	-2	-1	0	1	2		
PTAT						1.36	
UDC						1.34	
FLC						0.28	
Stature						1.66	Tall
Strength						0.31	Strong
Body Depth						0.39	Deep
Dairy form						1.53	Open
Rump Angle						-0.35	High Pins
Thurl Width						0.93	Wide
R. Legs-S View						-0.77	Posty
R. Legs-R View						0.15	Straight
Foot Angle						0.99	Steep
F&L Score						0.74	High
F. Udder Att.						1.71	Strong
R. Udder Ht.						1.78	High
R. Udder Wid.						1.54	Wide
Udder Cleft						0.77	Strong
Udder Depth						1.97	Shallow
F. Teat Place						0.70	Close
R. Teat Place						0.69	Close
Teat Length						0.11	Long

Pedigree

Sire	PEAK ALTAALANZO-ET
Dam	PEAK AROMATIC-ET
MGS	CO-OP HH ALTAJUMP CUT-ET
MGD	WINSTAR ASTRID-ET
MGGS	MR T-SPRUCE FRAZZ LIONEL-ET
MGGD	WINSTAR ACHIEVER 4832-ET

ICC™

1075

PREF	819	SUST	258	FERT	-2
------	-----	------	-----	------	----

TPI 3111 NMS 1100

Production

Milk	+1122 Lbs	79% Rel
Protein	+58 Lbs	+0.08%
Fat	+136 Lbs	+0.32%
Feed Saved	-24	44% Rel
RobotX™	106	

Health Traits

Productive Life	+4.7	Daughter Pregnancy Rate	-1.1
Livability	+1.5	Cow Conception Rate	+0.8
Somatic Cell Score	+2.63	Heifer Conception Rate	+1.9
Mastitis	3.7%	Metritis	2.2%
Ketosis	2.1%	Displaced Abomasum	0.4%
Retained Placenta	0.2%	Milk Fever	0.0%

Calving Traits

Sire Calving Ease	2.1%	62% Rel	0 Obs
Dtr Calving Ease	2.2%	57% Rel	0 Obs 0 dtr.
Sire Stillbirth	5.7%	58% Rel	0 Obs
Daughter Stillbirth	5.0%	55% Rel	0 Obs 0 dtr.

Sire Fertility

PregCheck™	-
PregCheck+™	-
Sire Conception Rate	-



BULLPOCALYPSE

001HO16649 - 743012

PEAK BULLPOCALYPSE-ET

HO840M003247843699 | DOB 05/24/2022

Kappa-Casein BB | **Beta-Casein** A2A2

Haplotypes HH1F HH2F HH3F HH4F HH5F HCDF HH6F
HMW0

Genetic Codes TC TD TL TV TY MWF

aAa 234 | **DMS** 126,123 | **EFI** 12.10%

Current Proof USA-202312

CDCB & HA-USA Genetic Evaluations 12/2023

Conformation

Based on - daughters in - herds (77% Rel)

PTAT				1.72	
UDC				1.83	
FLC				-0.14	
	-2	-1	0	1	2
Stature				1.36	Tall
Strength				0.44	Strong
Body Depth				0.49	Deep
Dairy form				1.22	Open
Rump Angle				0.16	Sloped
Thurl Width				1.31	Wide
R. Legs-S View				-0.12	Posty
R. Legs-R View				-0.23	Hock In
Foot Angle				0.44	Steep
F&L Score				0.25	High
F. Udder Att.				2.27	Strong
R. Udder Ht.				2.32	High
R. Udder Wid.				2.39	Wide
Udder Cleft				1.21	Strong
Udder Depth				1.66	Shallow
F. Teat Place				0.87	Close
R. Teat Place				1.08	Close
Teat Length				0.25	Long

Pedigree

Sire	PEAK ALTAGADZOOK-ET
Dam	PEAK 46013-ET
MGS	PEAK NO EXCUSE-ET
MGD	TRIP-L TANYA-ET
MGGS	REDROCK-VIEW KLUTCH-ET
MGGD	AUGUSTINIAN DELTA DAWN-ET

ICC™

990

PREF 698 SUST 260 FERT 32

TPI 3088 NMS 1020

Production

Milk	+1285 Lbs	79% Rel
Protein	+67 Lbs	+0.09%
Fat	+103 Lbs	+0.18%
Feed Saved	-123	43% Rel
RobotX™	94	

Health Traits

Productive Life	+5.1	Daughter Pregnancy Rate	+0.1
Livability	+1.2	Cow Conception Rate	+1.8
Somatic Cell Score	+2.67	Heifer Conception Rate	+2.0
Mastitis	3.2%	Metritis	2.4%
Ketosis	2.0%	Displaced Abomasum	0.3%
Retained Placenta	0.1%	Milk Fever	0.0%

Calving Traits

Sire Calving Ease	2.2%	58% Rel	0 Obs
Dtr Calving Ease	1.9%	56% Rel	0 Obs 0 dtr.
Sire Stillbirth	5.5%	54% Rel	0 Obs
Daughter Stillbirth	3.7%	54% Rel	0 Obs 0 dtr.

Sire Fertility

PregCheck™	-
PregCheck+™	-
Sire Conception Rate	-



ARTEMIS

001H016505 - 738851

PLAIN-KNOLL PEAK ARTEMIS-ET

HO840M003235933472 | DOB 12/17/2021

Kappa-Casein BB | **Beta-Casein** A1A2

Haplotypes HH1F HH2F HH3F HH4F HH5F HCDF HH6F
HMW0

Genetic Codes TC TD TL TV TY MWF

aAa 423 | **DMS** 123,135 | **EFI** 11.60%

Current Proof USA-202312

CDCB & HA-USA Genetic Evaluations 12/2023

Conformation

Based on - daughters in - herds (78% Rel)

	-2	-1	0	1	2		
PTAT						1.24	
UDC						1.21	
FLC						0.58	
Stature						0.20	Tall
Strength						0.10	Strong
Body Depth						0.05	Deep
Dairy form						1.00	Open
Rump Angle						0.26	Sloped
Thurl Width						-0.15	Narrow
R. Legs-S View						-0.90	Posty
R. Legs-R View						0.53	Straight
Foot Angle						0.69	Steep
F&L Score						0.61	High
F. Udder Att.						1.26	Strong
R. Udder Ht.						1.98	High
R. Udder Wid.						1.97	Wide
Udder Cleft						-0.08	Weak
Udder Depth						0.41	Shallow
F. Teat Place						-0.22	Wide
R. Teat Place						-0.21	Wide
Teat Length						0.08	Long

Pedigree

Sire	PEAK ALTAZEOLITE-ET
Dam	PLAIN-KNOLL MARIAN 3061-ET
MGS	PINE-TREE ACURA-ET
MGD	PLAIN-KNOLL RESOLVE 1893-ET
MGGS	BLUMENFELD JEDI RESOLVE-ET
MGGD	PLAIN-KNOLL JOSUPER 794-ET

ICC™

1133

PREF 886 SUST 214 FERT 33

TPI 3087 NMS 1109

Production

Milk	+1614 Lbs	80% Rel
Protein	+73 Lbs	+0.08%
Fat	+114 Lbs	+0.18%
Feed Saved	+125	44% Rel
RobotX™	104	

Health Traits

Productive Life	+4.8	Daughter Pregnancy Rate	-0.2
Livability	+0.8	Cow Conception Rate	+1.1
Somatic Cell Score	+2.91	Heifer Conception Rate	+2.6
Mastitis	1.6%	Metritis	1.6%
Ketosis	1.4%	Displaced Abomasum	0.3%
Retained Placenta	-0.2%	Milk Fever	0.1%

Calving Traits

Sire Calving Ease	1.9%	72% Rel	5 Obs
Dtr Calving Ease	2.1%	71% Rel	0 Obs 0 dtr.
Sire Stillbirth	5.6%	64% Rel	5 Obs
Daughter Stillbirth	4.3%	65% Rel	0 Obs 0 dtr.

Sire Fertility

PregCheck™	99	61% Rel
PregCheck+™	97	82% Rel
Sire Conception Rate	-	



MAKEAWISH

001HO16763 - 745620

PEAK MAKEAWISH-ET

HO840M003251555507 | DOB 07/25/2022

Kappa-Casein AB | **Beta-Casein** A2A2

Haplotypes HH1F HH2F HH3F HH4F HH5F HCDF HH6F
HMW0

Genetic Codes TC TD TL TV TY MWF

aAa 423 | **DMS** 345,135 | **EFI** 12.30%

Current Proof USA-202312

CDCB & HA-USA Genetic Evaluations 12/2023

Conformation

Based on - daughters in - herds (77% Rel)

	-2	-1	0	1	2		
PTAT						0.33	
UDC						0.68	
FLC						-0.02	
Stature						-0.41	Short
Strength						-0.74	Frail
Body Depth						-1.02	Shallow
Dairy form						0.05	Open
Rump Angle						1.20	Sloped
Thurl Width						-0.17	Narrow
R. Legs-S View						-0.38	Posty
R. Legs-R View						-0.27	Hock In
Foot Angle						-0.10	Low
F&L Score						-0.05	Low
F. Udder Att.						1.20	Strong
R. Udder Ht.						0.33	High
R. Udder Wid.						0.44	Wide
Udder Cleft						0.05	Strong
Udder Depth						0.73	Shallow
F. Teat Place						0.66	Close
R. Teat Place						0.22	Close
Teat Length						-0.71	Short

Pedigree

Sire	PEAK ZAPPY-ET
Dam	PEAK ONE WAY 45439-ET
MGS	PEAK ALTAPLINKO-ET
MGD	PEAK ODESA ROBERT 62196-ET
MGGS	SCHOENE-KUH ALTAROBERT-ET
MGGD	PEAK ODESSA-ET

ICC™

1201

PREF	839	SUST	330	FERT	32
------	-----	------	-----	------	----

TPI 3077 NMS 1183

Production

Milk	+1010 Lbs	79% Rel
Protein	+61 Lbs	+0.10%
Fat	+124 Lbs	+0.29%
Feed Saved	+78	44% Rel
RobotX™	100	

Health Traits

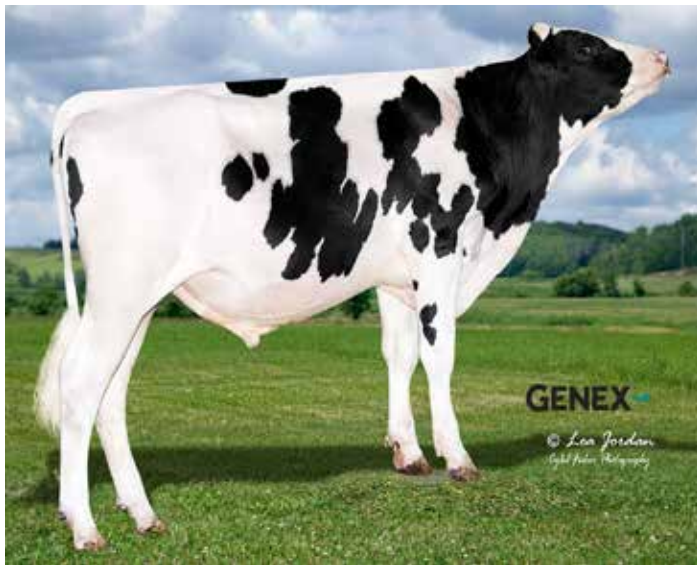
Productive Life	+6.3	Daughter Pregnancy Rate	+0.1
Livability	+3.6	Cow Conception Rate	+2.0
Somatic Cell Score	+2.66	Heifer Conception Rate	+2.0
Mastitis	2.2%	Metritis	2.1%
Ketosis	1.7%	Displaced Abomasum	0.5%
Retained Placenta	0.2%	Milk Fever	0.0%

Calving Traits

Sire Calving Ease	1.6%	62% Rel	0 Obs
Dtr Calving Ease	1.8%	57% Rel	0 Obs 0 dtr.
Sire Stillbirth	5.1%	58% Rel	0 Obs
Daughter Stillbirth	4.3%	55% Rel	0 Obs 0 dtr.

Sire Fertility

PregCheck™	-
PregCheck+™	-
Sire Conception Rate	-



BIGBUCKZ

001HO16360 - 736715

PEAK BIGBUCKZ-ET

HO840M003242794157 | DOB 09/30/2021

Kappa-Casein BB | **Beta-Casein** A1A2

Haplotypes HH1F HH2F HH3F HH4F HH5F HCDF HH6F
HMW0

Genetic Codes TC TD TL TV TY MWF

aAa 423 | **DMS** 561,126 | **EFI** 11.50%

Current Proof USA-202312

CDCB & HA-USA Genetic Evaluations 12/2023

Conformation

Based on - daughters in - herds (78% Rel)

	-2	-1	0	1	2		
PTAT						1.07	
UDC						1.19	
FLC						0.17	
Stature						0.26	Tall
Strength						-0.14	Frail
Body Depth						-0.25	Shallow
Dairy form						0.92	Open
Rump Angle						0.53	Sloped
Thurl Width						-0.04	Narrow
R. Legs-S View						-0.76	Posty
R. Legs-R View						0.33	Straight
Foot Angle						0.72	Steep
F&L Score						0.16	High
F. Udder Att.						1.24	Strong
R. Udder Ht.						1.48	High
R. Udder Wid.						1.81	Wide
Udder Cleft						0.33	Strong
Udder Depth						0.56	Shallow
F. Teat Place						0.68	Close
R. Teat Place						0.81	Close
Teat Length						-0.14	Short

Pedigree

Sire	PEAK PENDULUM-ET
Dam	PEAK MAUDIE-ET
MGS	PINE-TREE-I PURSUIT
MGD	PINE-TREE MANDOLIN-ET
MGGS	ABS MEDLEY-ET
MGGD	SEAGULL-BAY MY OCTAVIA-ET

ICC™

1119

PREF 778 SUST 280 FERT 61

TPI 3004 NMS 1071

Production

Milk	+1299 Lbs	79% Rel
Protein	+63 Lbs	+0.08%
Fat	+95 Lbs	+0.15%
Feed Saved	+169	44% Rel
RobotX™	103	

Health Traits

Productive Life	+6.0	Daughter Pregnancy Rate	+0.7
Livability	+2.6	Cow Conception Rate	+2.4
Somatic Cell Score	+2.83	Heifer Conception Rate	+2.9
Mastitis	1.5%	Metritis	2.0%
Ketosis	1.9%	Displaced Abomasum	0.5%
Retained Placenta	0.0%	Milk Fever	-0.1%

Calving Traits

Sire Calving Ease	1.6%	72% Rel	1 Obs
Dtr Calving Ease	1.5%	72% Rel	0 Obs 0 dtr.
Sire Stillbirth	5.1%	65% Rel	1 Obs
Daughter Stillbirth	4.4%	65% Rel	0 Obs 0 dtr.

Sire Fertility

PregCheck™	102	83% Rel
PregCheck+™	109	94% Rel
Sire Conception Rate	1.8	81% Rel



TORETTO

001HO15405 - 718127

PEAK TORETTA-ET

HO840M003205436134 | DOB 07/08/2019

Kappa-Casein AB | **Beta-Casein** A1A2

Haplotypes HH1F HH2F HH3F HH4F HH5C HCDF HH6F
HMW0

Genetic Codes TC TD TL TP TR TV TY MWF

aAa 432 | **DMS** 135,123 | **EFI** 12.30%

Current Proof USA-202312

CDCB & HA-USA Genetic Evaluations 12/2023

Conformation

Based on 28 daughters in 2 herds (84% Rel)

	-2	-1	0	1	2		
PTAT						0.94	
UDC						2.00	
FLC						-0.84	
Stature						0.24	Tall
Strength						-0.43	Frail
Body Depth						-0.43	Shallow
Dairy form						0.72	Open
Rump Angle						0.79	Sloped
Thurl Width						0.42	Wide
R. Legs-S View						-2.04	Posty
R. Legs-R View						-1.04	Hock In
Foot Angle						0.13	Steep
F&L Score						-0.59	Low
F. Udder Att.						2.20	Strong
R. Udder Ht.						2.31	High
R. Udder Wid.						2.26	Wide
Udder Cleft						0.86	Strong
Udder Depth						1.76	Shallow
F. Teat Place						1.48	Close
R. Teat Place						1.29	Close
Teat Length						-1.12	Short

Pedigree

Sire	SILVERRIDGE V TIMBERLAKE
Dam	AURORA POLARIS
MGS	S-S-I MONTROSS JEDI-ET
MGD	AURORA BOMBERO 15840-ET
MGGS	RICHMOND-FD EL BOMBERO-ET
MGGD	AURORA MAYFIELD 13965-ET

ICC™

1086

PREF	683	SUST	340	FERT	63
------	-----	------	-----	------	----

TPI 2960 NMS 1050

Production

Milk	+1756 Lbs	95% Rel
Protein	+62 Lbs	+0.03%
Fat	+68 Lbs	0.00%
Feed Saved	+180	51% Rel
RobotX™	93	

Health Traits

Productive Life	+7.5	Daughter Pregnancy Rate	+1.2
Livability	+3.1	Cow Conception Rate	+3.4
Somatic Cell Score	+2.65	Heifer Conception Rate	+2.1
Mastitis	0.6%	Metritis	2.8%
Ketosis	1.4%	Displaced Abomasum	0.5%
Retained Placenta	0.7%	Milk Fever	-0.1%

Calving Traits

Sire Calving Ease	1.4%	98% Rel	2328 Obs
Dtr Calving Ease	1.6%	79% Rel	125 Obs 125 dtr.
Sire Stillbirth	5.2%	95% Rel	2218 Obs
Daughter Stillbirth	4.5%	80% Rel	121 Obs 121 dtr.

Sire Fertility

PregCheck™	99	98% Rel
PregCheck+™	98	99% Rel
Sire Conception Rate	-0.1	97% Rel



MAJORMODE

001HO16305 - 736706

PEAK MAJORMODE-ET

HO840M003238827446 | DOB 09/08/2021

Kappa-Casein BE | **Beta-Casein** A1A2

Haplotypes HH1F HH2F HH3F HH4F HH5F HCDF HH6F
HMW0

Genetic Codes TC TD TL TV TY MWF

aAa 243 | **DMS** 123,135 | **EFI** 11.60%

Current Proof USA-202312

CDCB & HA-USA Genetic Evaluations 12/2023

Conformation

Based on - daughters in - herds (78% Rel)

	-2	-1	0	1	2		
PTAT						1.18	
UDC						1.35	
FLC						-0.34	
Stature						0.42	Tall
Strength						0.52	Strong
Body Depth						0.71	Deep
Dairy form						1.44	Open
Rump Angle						1.68	Sloped
Thurl Width						0.89	Wide
R. Legs-S View						0.27	Sickle
R. Legs-R View						-0.68	Hock In
Foot Angle						0.14	Steep
F&L Score						-0.12	Low
F. Udder Att.						1.01	Strong
R. Udder Ht.						1.66	High
R. Udder Wid.						2.43	Wide
Udder Cleft						1.67	Strong
Udder Depth						0.19	Shallow
F. Teat Place						1.97	Close
R. Teat Place						2.31	Close
Teat Length						-0.88	Short

Pedigree

Sire	PEAK ALTAMAGNIFIQUE-ET
Dam	PEAK PALOMA-ET
MGS	NO-FLA ALTABUNDLE-ET
MGD	AURORA POLARIS
MGGS	S-S-I MONTROSS JEDI-ET
MGGD	AURORA BOMBERO 15840-ET

ICC™

943

PREF	709	SUST	184	FERT	50
------	-----	------	-----	------	----

TPI 2948 NMS 960

Production

Milk	+1626 Lbs	80% Rel
Protein	+64 Lbs	+0.05%
Fat	+88 Lbs	+0.09%
Feed Saved	+55	44% Rel
RobotX™	87	

Health Traits

Productive Life	+4.9	Daughter Pregnancy Rate	+0.4
Livability	+1.1	Cow Conception Rate	+2.1
Somatic Cell Score	+2.83	Heifer Conception Rate	+2.7
Mastitis	1.3%	Metritis	1.4%
Ketosis	1.2%	Displaced Abomasum	0.3%
Retained Placenta	0.3%	Milk Fever	-0.1%

Calving Traits

Sire Calving Ease	1.9%	63% Rel	0 Obs
Dtr Calving Ease	1.6%	61% Rel	0 Obs 0 dtr.
Sire Stillbirth	6.1%	60% Rel	0 Obs
Daughter Stillbirth	4.3%	60% Rel	0 Obs 0 dtr.

Sire Fertility

PregCheck™	101	67% Rel
PregCheck+™	97	97% Rel
Sire Conception Rate	0.1	70% Rel



PLAYBACK

001HO15476 - 718145

PEAK PLAYBACK-ET

HO840M003205436197 | DOB 07/24/2019

Kappa-Casein AB | **Beta-Casein** A1A2

Haplotypes HH1F HH2F HH3F HH4F HH5C HCDF HH6F
HMW0

Genetic Codes TC TD TL TP TR TV TY MWF

aAa 342 | **DMS** 246,234 | **EFI** 11.30%

Current Proof USA-202312

CDCB & HA-USA Genetic Evaluations 12/2023

Conformation

Based on - daughters in - herds (80% Rel)

PTAT					1.74
UDC					1.32
FLC					0.98
	-2	-1	0	1	2
Stature					1.68 Tall
Strength					0.59 Strong
Body Depth					0.43 Deep
Dairy form					1.07 Open
Rump Angle					0.65 Sloped
Thurl Width					0.47 Wide
R. Legs-S View					-1.03 Posty
R. Legs-R View					1.54 Straight
Foot Angle					1.99 Steep
F&L Score					1.16 High
F. Udder Att.					1.82 Strong
R. Udder Ht.					1.95 High
R. Udder Wid.					1.89 Wide
Udder Cleft					0.34 Strong
Udder Depth					2.06 Shallow
F. Teat Place					-0.23 Wide
R. Teat Place					-0.40 Wide
Teat Length					0.73 Long

ICC™

990

PREF	570	SUST	345	FERT	75
------	-----	------	-----	------	----

TPI 2931 NMS 919

Production

Milk	+1359 Lbs	83% Rel
Protein	+54 Lbs	+0.04%
Fat	+67 Lbs	+0.05%
Feed Saved	+58	46% Rel
RobotX™	109	

Health Traits

Productive Life	+6.5	Daughter Pregnancy Rate	+0.7
Livability	+2.2	Cow Conception Rate	+2.6
Somatic Cell Score	+2.67	Heifer Conception Rate	+3.8
Mastitis	3.9%	Metritis	0.3%
Ketosis	1.6%	Displaced Abomasum	0.8%
Retained Placenta	-0.5%	Milk Fever	0.0%

Calving Traits

Sire Calving Ease	2.2%	96% Rel	1797 Obs
Dtr Calving Ease	1.8%	70% Rel	6 Obs 6 dtr.
Sire Stillbirth	5.7%	91% Rel	1838 Obs
Daughter Stillbirth	3.8%	64% Rel	6 Obs 6 dtr.

Sire Fertility

PregCheck™	101	97% Rel
PregCheck+™	97	97% Rel
Sire Conception Rate	0.8	96% Rel

Pedigree

Sire	PINE-TREE-I PURSUIT
Dam	AURORA STARGAZE-ET
MGS	BLUMENFELD JEDI REASON-ET
MGD	AURORA DELTA 1689I
MGGS	MR MOGUL DELTA 1427-ET
MGGD	AURORA SALOON 14693

COBACTAN LC

Antibiótico de uso intramamario

Composición: Cefquinoma 75 mg

Dosis y vía de administración: Tres aplicaciones de una jeringa cada una por cuarto infectado cada 12 horas

Período de resguardo: 96 horas desde la última aplicación

Presentación: Caja de 15 jeringas + toallas desinfectantes



Tratamiento de mastitis clínicas

Cobactan® 2,5%

Antibiótico de amplio espectro

Composición: Cefquinoma 25 mg

Dosis y vía de administración: 1mL/25 kg. PV, vía Intramuscular, cada 24 horas por 3 a 5 días.

Período de resguardo en leche: 24 horas desde la última aplicación.

Presentación: 100 ml.



Tratamiento de mastitis clínicas

Cepravin®

Antibiótico intramamario

Composición: Dihidrato de cefalonio 250 mg

Dosis y vía de administración: 1 jeringa por cada pezon

Período de resguardo: 96 horas después del parto, si el secado fue de al menos 51 días.

Presentación: Caja con 20 jeringas



Secado | Prevención y tratamiento de mastitis subclínicas

NAFPENZAL DC

Antibiótico intramamario

Composición: Bencilpenicilina procaínica 300.000 U.I., Dihidroestreptomicina 100 mg + Nafcilina 100 mg

Dosis y vía de administración: Ordeñar a fondo la vaca, limpiar con la toalla desinfectante y aplicar una jeringa en cada cuarto cuando la vaca entra en el periodo de secado al final de cada lactación. Secados hasta 50 días.

Período de resguardo: Secado mínimo de 35 días y luego descarte de primeros dos ordeñes.

Presentación: Caja de 20 jeringas + toallas desinfectantes



Secado | Prevención y tratamiento de mastitis subclínicas

La diarrea en las terneras cuesta dinero.

La diarrea en las terneras sigue siendo una enfermedad seria y costosa para la empresa ganadera. Es la enfermedad más común en terneras jóvenes y suma cerca del 50% de las muertes de todas las terneras

Halocur®

El producto específico y con registro para la prevención y tratamiento de la Criptosporidiosis.





KAZAAM

001HO15986 - 728151

PEAK KAZAAM-ET

HO840M003215425982 | DOB 11/18/2020

Kappa-Casein AB | **Beta-Casein** A2A2

Haplotypes HH1F HH2F HH3F HH4F HH5F HCDF HH6F
HMW0

Genetic Codes TC TD TL TR TV TY MWF

aAa 243 | **DMS** 456,345 | **EFI** 11.90%

Current Proof USA-202312

CDCB & HA-USA Genetic Evaluations 12/2023

Conformation

Based on - daughters in - herds (78% Rel)

	-2	-1	0	1	2		
PTAT						1.32	
UDC						2.02	
FLC						-0.29	
Stature						0.55	Tall
Strength						-0.15	Frail
Body Depth						-0.31	Shallow
Dairy form						1.00	Open
Rump Angle						0.30	Sloped
Thurl Width						0.94	Wide
R. Legs-S View						0.21	Sickle
R. Legs-R View						-0.24	Hock In
Foot Angle						0.11	Steep
F&L Score						-0.14	Low
F. Udder Att.						2.36	Strong
R. Udder Ht.						2.86	High
R. Udder Wid.						2.33	Wide
Udder Cleft						0.20	Strong
Udder Depth						1.92	Shallow
F. Teat Place						0.32	Close
R. Teat Place						0.22	Close
Teat Length						-0.89	Short

Pedigree

Sire	PEAK NO EXCUSE-ET
Dam	REGAN-DANHOF R CARA-ET
MGS	S-S-I BG FRZZLD RIVETING-ET
MGD	REGAN-DANHOF G CAMILLA-ET
MGGS	WESTCOAST GUARANTEE
MGGD	REGAN-DANHOF JEDI CASHMERE

ICC™

986

PREF	646	SUST	278	FERT	62
------	-----	------	-----	------	----

TPI 2925 NMS 953

Production

Milk	+1354 Lbs	81% Rel
Protein	+59 Lbs	+0.06%
Fat	+68 Lbs	+0.05%
Feed Saved	+151	45% Rel
RobotX™	103	

Health Traits

Productive Life	+5.8	Daughter Pregnancy Rate	+0.4
Livability	+2.5	Cow Conception Rate	+2.3
Somatic Cell Score	+2.76	Heifer Conception Rate	+3.5
Mastitis	1.7%	Metritis	1.3%
Ketosis	2.2%	Displaced Abomasum	0.9%
Retained Placenta	0.0%	Milk Fever	0.0%

Calving Traits

Sire Calving Ease	2.3%	81% Rel	114 Obs
Dtr Calving Ease	2.5%	71% Rel	0 Obs 0 dtr.
Sire Stillbirth	6.0%	66% Rel	114 Obs
Daughter Stillbirth	4.1%	65% Rel	0 Obs 0 dtr.

Sire Fertility

PregCheck™	-
PregCheck+™	-
Sire Conception Rate	-

BIG HYPE

001HO15742 - PEAK BIG HYPE-ET
AltaZAZZLE x MARIUS x DELTA



Producción

Mérito Neto	+\$888	Con.75%
Mérito Queso	+\$908	
Leche	+510	
Grasa	+95	0.26%
Proteína	+42	0.09%
Combinada Grasa y Proteína	+137	
Eficiencia Alimenticia Esperada	+33	Con.46%

Salud

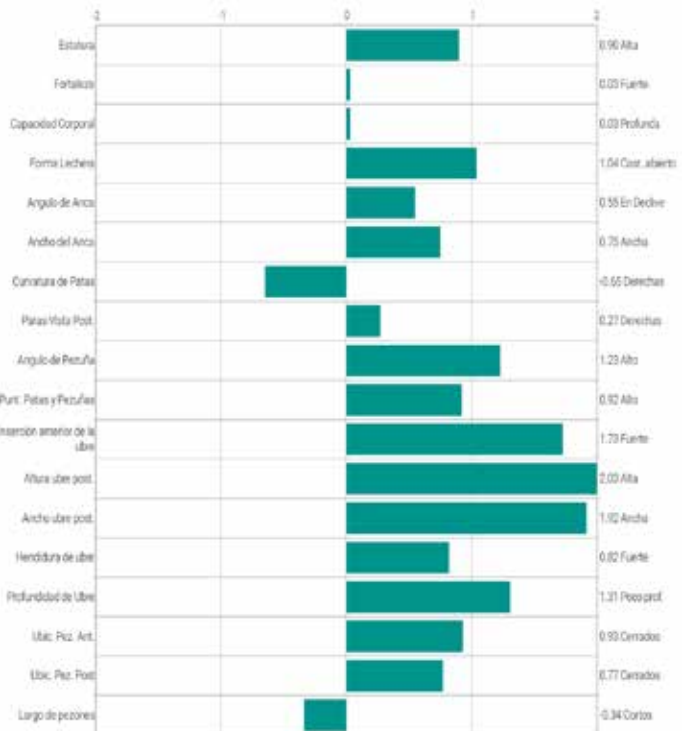
Vida productiva	+4.7	
Tasa Permanencia en el Hato (LIV)	+1.3	
Permanencia en el hato de las vaquillas	+0.5	
Puntaje de Células Somáticas (SCS)	2.78	
Tasa de Preñez de las Hijas	+0.8	
Tasa Concepción Vaca	+2.0	
Tasa Concepción Vaquilla	+1.8	
Tasa Concepción Toro	+0.7	Con.N/A%
PregCheck™	99	Con.91%
PregCheck+™	501: 100	Con.96%
Consanguinidad Esperada	12.6%	

Parto

Fac. Parto	1.8%	Con.91%
Facilidad de Parto Hijas	1.8%	Con.70%
Muerte al nacer - toro	5.6%	Con.84%
Muerte al nacer - hijas	4.8%	Con.65%
Edad al primer parto	+4.6	

Número de Registro:	HO840003215425452
Fecha de Nacimiento:	2020-05-06
Estatus:	Activo
Prueba:	202312
Recesivos o Haplotipos:	TC,TD,TL,TP,TR,TV,TY, HH6, HMWF, HMWO
Kappa Caseína:	BB
Beta Caseína:	A1A2
Número de Hijas:	N/A
Número de Hatos:	N/A
RHA%:	99%
DMS:	345,456
aAa:	243

Toro: PEAK ALTAZAZZLE-ET
Madre: PEAK MAGENTA-ET
Abuelo Materno: PROGENESIS MARIUS
Bisabuelo Materno: MR MOGUL DELTA 1427-ET



Conformación

TPI®	2921	
PTAT	1.43	Con.80%
Compuesto Ubre	1.52	
Compuesto Patas y Pezuñas	0.65	
Compuesto Corporal	-0.13	



PENDULUM

001HO15515 - 718153

PEAK PENDULUM-ET

HO840M003213001120 | DOB 03/16/2020

Kappa-Casein BE | **Beta-Casein** A1A1

Haplotypes HH1F HH2F HH3F HH4F HH5F HCDF HH6F

HMW0

Genetic Codes TC TD TL TP TR TV TY MWF

aAa 423 | **DMS** 456,246 | **EFI** 11.50%

Current Proof USA-202312

CDCB & HA-USA Genetic Evaluations 12/2023

Conformation

Based on - daughters in - herds (80% Rel)

	-2	-1	0	1	2		
PTAT						0.46	
UDC						0.65	
FLC						-1.01	
Stature						0.45	Tall
Strength						-0.42	Frail
Body Depth						-0.10	Shallow
Dairy form						1.50	Open
Rump Angle						0.60	Sloped
Thurl Width						-0.45	Narrow
R. Legs-S View						-0.42	Posty
R. Legs-R View						-1.13	Hock In
Foot Angle						0.04	Steep
F&L Score						-0.81	Low
F. Udder Att.						0.97	Strong
R. Udder Ht.						0.89	High
R. Udder Wid.						0.98	Wide
Udder Cleft						0.11	Strong
Udder Depth						0.40	Shallow
F. Teat Place						0.67	Close
R. Teat Place						0.59	Close
Teat Length						-0.71	Short

Pedigree

Sire	MAPLEHURST DELROY TORRO-ET
Dam	PEAK PERDITA-ET
MGS	PEAK ALTAEXPLOSION-ET
MGD	AURORA POLARIS
MGGS	S-S-I MONTROSS JEDI-ET
MGGD	AURORA BOMBERO 15840-ET

ICC™

1131

PREF	804	SUST	257	FERT	70
------	-----	------	-----	------	----

TPI 2919 NMS 1077

Production

Milk	+1123 Lbs	81% Rel
Protein	+55 Lbs	+0.07%
Fat	+104 Lbs	+0.21%
Feed Saved	+239	45% Rel
RobotX™	104	

Health Traits

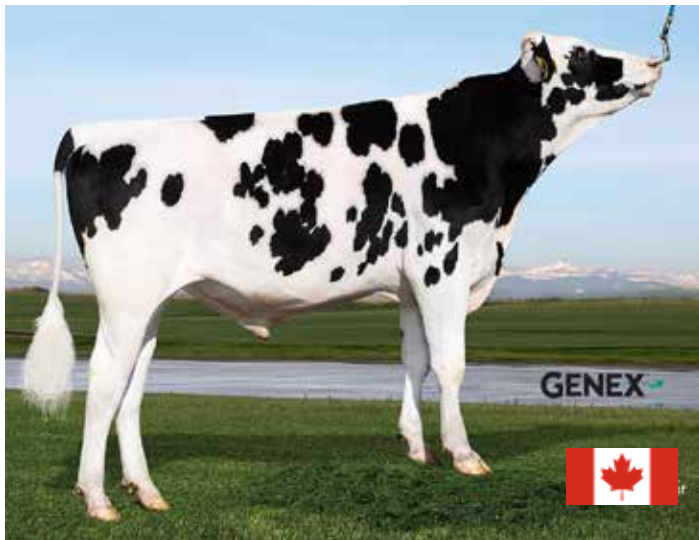
Productive Life	+5.7	Daughter Pregnancy Rate	+0.8
Livability	+2.1	Cow Conception Rate	+2.1
Somatic Cell Score	+2.84	Heifer Conception Rate	+3.3
Mastitis	0.1%	Metritis	2.1%
Ketosis	1.6%	Displaced Abomasum	0.6%
Retained Placenta	0.1%	Milk Fever	0.0%

Calving Traits

Sire Calving Ease	1.4%	96% Rel	1179 Obs
Dtr Calving Ease	0.8%	76% Rel	0 Obs 0 dtr.
Sire Stillbirth	4.4%	92% Rel	1107 Obs
Daughter Stillbirth	3.2%	71% Rel	0 Obs 0 dtr.

Sire Fertility

PregCheck™	99	92% Rel
PregCheck+™	103	99% Rel
Sire Conception Rate	-0.1	85% Rel



MONEYTALKS

001HO16488 - 738864

PEAK MONEYTALKS-ET

HO840M003245966388 | DOB 12/30/2021

Kappa-Casein AB | **Beta-Casein** A2A2

Haplotypes HH1F HH2F HH3F HH4F HH5F HCDF HH6F

HMW0

Genetic Codes TC TD TL TR TV TY MWF

aAa 243 | **DMS** 345,135 | **EFI** 11.90%

Current Proof USA-202312

CDCB & HA-USA Genetic Evaluations 12/2023

Conformation

Based on - daughters in - herds (78% Rel)

	-2	-1	0	1	2		
PTAT						1.22	
UDC						1.59	
FLC						0.08	
Stature						0.60	Tall
Strength						-0.37	Frail
Body Depth						-0.66	Shallow
Dairy form						0.24	Open
Rump Angle						1.76	Sloped
Thurl Width						0.14	Wide
R. Legs-S View						-1.48	Posty
R. Legs-R View						-0.01	Hock In
Foot Angle						1.00	Steep
F&L Score						0.27	High
F. Udder Att.						2.35	Strong
R. Udder Ht.						1.50	High
R. Udder Wid.						1.37	Wide
Udder Cleft						0.46	Strong
Udder Depth						2.46	Shallow
F. Teat Place						0.91	Close
R. Teat Place						0.56	Close
Teat Length						-1.50	Short

Pedigree

Sire	AURORA DZUNDA-ET
Dam	PEAK 83150-ET
MGS	PEAK FORTNITE-ET
MGD	PEAK MAGENTA-ET
MGGS	PROGENESIS MARIUS
MGGD	MERCEDES DELTA 9619-ET

ICC™

871

PREF	645	SUST	214	FERT	12
------	-----	------	-----	------	----

TPI 2898 NMS 918

Production

Milk	+1070 Lbs	79% Rel
Protein	+47 Lbs	+0.05%
Fat	+96 Lbs	+0.19%
Feed Saved	+49	44% Rel
RobotX™	101	

Health Traits

Productive Life	+5.1	Daughter Pregnancy Rate	+0.0
Livability	+0.8	Cow Conception Rate	+1.5
Somatic Cell Score	+2.81	Heifer Conception Rate	+0.8
Mastitis	3.4%	Metritis	1.6%
Ketosis	1.6%	Displaced Abomasum	0.3%
Retained Placenta	0.3%	Milk Fever	-0.2%

Calving Traits

Sire Calving Ease	1.9%	60% Rel	0 Obs
Dtr Calving Ease	2.0%	58% Rel	0 Obs 0 dtr.
Sire Stillbirth	5.4%	56% Rel	0 Obs
Daughter Stillbirth	4.2%	56% Rel	0 Obs 0 dtr.

Sire Fertility

PregCheck™	-
PregCheck+™	-
Sire Conception Rate	-



INSTANT REPLAY

001HO15843 - 727071

PEAK INSTANT REPLAY-ET

HO840M003212150679 | DOB 07/29/2020

Kappa-Casein AA | **Beta-Casein** A1A2

Haplotypes HH1F HH2F HH3F HH4F HH5F HCDF HH6F
HMW0

Genetic Codes TC TD TL TR TV TY MWF

aAa 423 | **DMS** 234,345 | **EFI** 11.40%

Current Proof USA-202312

CDCB & HA-USA Genetic Evaluations 12/2023

Conformation

Based on - daughters in - herds (80% Rel)

	-2	-1	0	1	2		
PTAT						0.90	
UDC						1.39	
FLC						-0.06	
Stature						0.53	Tall
Strength						0.03	Strong
Body Depth						-0.28	Shallow
Dairy form						0.46	Open
Rump Angle						1.20	Sloped
Thurl Width						0.50	Wide
R. Legs-S View						0.09	Sickle
R. Legs-R View						-0.10	Hock In
Foot Angle						-0.12	Low
F&L Score						0.11	High
F. Udder Att.						1.72	Strong
R. Udder Ht.						1.72	High
R. Udder Wid.						1.78	Wide
Udder Cleft						-0.11	Weak
Udder Depth						1.56	Shallow
F. Teat Place						-0.02	Wide
R. Teat Place						-0.05	Wide
Teat Length						-0.03	Short

Pedigree

Sire	PEAK ALTATIKI-ET
Dam	PEAK DORI-ET
MGS	PROGENESIS POSITIVE
MGD	PEAK DIOR-ET
MGGS	BACON-HILL PETY MODESTY-ET
MGGD	TRIPLECROWN-AL DIVINE-ET

ICC™

843

PREF	550	SUST	279	FERT	14
------	-----	------	-----	------	----

TPI 2800 NMS 831

Production

Milk	+1015 Lbs	81% Rel
Protein	+40 Lbs	+0.03%
Fat	+86 Lbs	+0.16%
Feed Saved	+7	46% Rel
RobotX™	107	

Health Traits

Productive Life	+5.0	Daughter Pregnancy Rate	-0.4
Livability	+2.7	Cow Conception Rate	+0.3
Somatic Cell Score	+2.75	Heifer Conception Rate	+1.7
Mastitis	2.5%	Metritis	2.0%
Ketosis	2.5%	Displaced Abomasum	0.9%
Retained Placenta	0.6%	Milk Fever	0.0%

Calving Traits

Sire Calving Ease	2.3%	93% Rel	492 Obs
Dtr Calving Ease	2.0%	70% Rel	0 Obs 0 dtr.
Sire Stillbirth	5.9%	86% Rel	480 Obs
Daughter Stillbirth	5.2%	64% Rel	0 Obs 0 dtr.

Sire Fertility

PregCheck™	101	90% Rel
PregCheck+™	98	98% Rel
Sire Conception Rate	-0.5	89% Rel

OZARK-P

001H015417 - REGAN-DANHOF OZARK-P-ET
GAMECHANGER x DELTA x SILVER



Producción

Mérito Neto	+\$781	Con.80%
Mérito Queso	+\$786	
Leche	+957	
Grasa	+82	0.16%
Proteína	+39	0.03%
Combinada Grasa y Proteína	+121	
Eficiencia Alimenticia Esperada	+317	Con.50%



Salud

Vida productiva	+2.3	
Tasa Permanencia en el Hato (LIV)	+0.0	
Permanencia en el hato de las vaquillas	+0.9	
Puntaje de Células Somáticas (SCS)	3.05	
Tasa de Preñez de las Hijas	+0.2	
Tasa Concepción Vaca	+1.9	
Tasa Concepción Vaquilla	+3.5	
Tasa Concepción Toro	+1.7	Con.N/A%
PregCheck™	102	Con.89%
PregCheck+™	501: 100	Con.97%
Consanguinidad Esperada	12.0%	



Parto

Fac. Parto	1.8%	Con.95%
Facilidad de Parto Hijas	2.1%	Con.75%
Muerte al nacer - toro	5.2%	Con.88%
Muerte al nacer - hijas	4.7%	Con.70%
Edad al primer parto	+3.3	

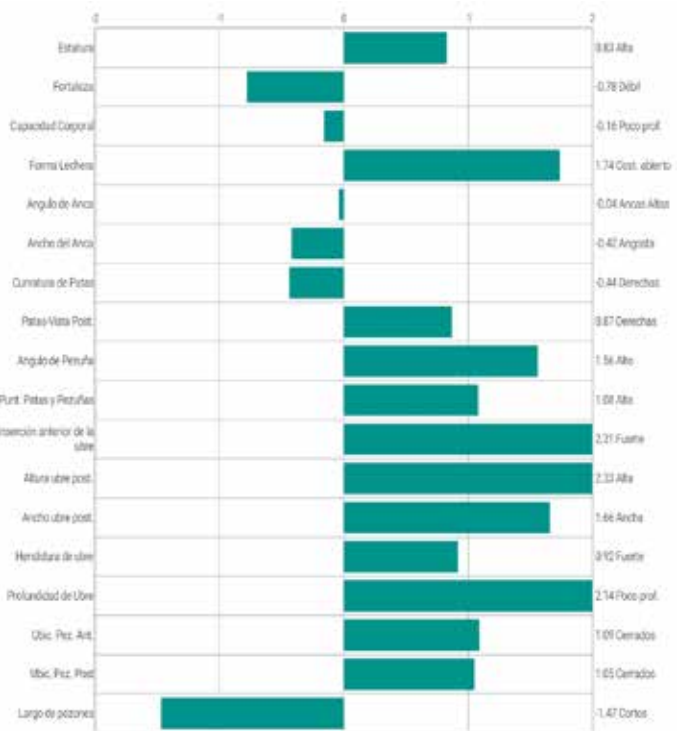
Número de Registro:	H0840003202074918
Fecha de Nacimiento:	2019-07-03
Estatus:	Inactivo
Prueba:	202312
Recesivos o Haplotipos:	PC,TC,TD,TL,TR,TV,TY, HMWF, HMWO
Kappa Caseína:	BB
Beta Caseína:	A1A1
Número de Hijas:	22
Número de Hatos:	6
RHA%:	99%
DMS:	561,126
aAa:	243

Toro: REGAN-DANHOF GAMECHANGER-ET

Madre: REGAN-DANHOF DELTA ONALEE

Abuelo Materno: MR MOGUL DELTA 1427-ET

Bisabuelo Materno: SEAGULL-BAY SILVER-ET



Conformación

TPI®	2787	
PTAT	1.55	Con.80%
Compuesto Ubre	1.81	
Compuesto Patas y Pezuñas	0.95	
Compuesto Corporal	-1.27	



INCREDIBLE

001HO15204 - 718081

PEAK INCREDIBLE-ET

HO840M003200824740 | DOB 01/19/2019

Kappa-Casein AB | **Beta-Casein** A2A2

Haplotypes HH1F HH2F HH3F HH4F HH5F HCDF HH6F
HMW0

Genetic Codes TC TD TL TP TR TV TY MWF

aAa 234 | **DMS** 135,561 | **EFI** 11.50%

Current Proof USA-202312

CDCB & HA-USA Genetic Evaluations 12/2023

Conformation

Based on 34 daughters in 7 herds (86% Rel)

	-2	-1	0	1	2		
PTAT						1.56	
UDC						1.17	
FLC						0.34	
Stature						1.53	Tall
Strength						0.63	Strong
Body Depth						0.47	Deep
Dairy form						0.99	Open
Rump Angle						0.41	Sloped
Thurl Width						0.78	Wide
R. Legs-S View						0.19	Sickle
R. Legs-R View						0.59	Straight
Foot Angle						1.11	Steep
F&L Score						0.62	High
F. Udder Att.						2.03	Strong
R. Udder Ht.						1.59	High
R. Udder Wid.						1.70	Wide
Udder Cleft						-0.18	Weak
Udder Depth						1.68	Shallow
F. Teat Place						0.10	Close
R. Teat Place						-0.46	Wide
Teat Length						0.07	Long

Pedigree

Sire	PEAK ALTALIAISON-ET
Dam	ENDCO EXACTA-ET
MGS	MR MOGUL DENVER 1426-ET
MGD	ROYAL-VISTA BALISTO ESTA-ET
MGGS	DE-SU 11236 BALISTO-ET
MGGD	ROYAL-VISTA EPIC ESTELLE-ET

ICC™

794

PREF	615	SUST	212	FERT	-33
------	-----	------	-----	------	-----

TPI 2781 NMS 796

Production

Milk	+1010 Lbs	95% Rel
Protein	+57 Lbs	+0.09%
Fat	+76 Lbs	+0.13%
Feed Saved	+66	50% Rel
RobotX™	107	

Health Traits

Productive Life	+3.7	Daughter Pregnancy Rate	-2.3
Livability	+1.4	Cow Conception Rate	-0.9
Somatic Cell Score	+2.73	Heifer Conception Rate	+2.0
Mastitis	1.4%	Metritis	0.5%
Ketosis	2.0%	Displaced Abomasum	0.9%
Retained Placenta	-0.2%	Milk Fever	-0.1%

Calving Traits

Sire Calving Ease	2.0%	96% Rel	2173 Obs
Dtr Calving Ease	1.9%	82% Rel	109 Obs 109 dtr.
Sire Stillbirth	6.2%	92% Rel	2347 Obs
Daughter Stillbirth	5.6%	79% Rel	108 Obs 108 dtr.

Sire Fertility

PregCheck™	101	94% Rel
PregCheck+™	99	96% Rel
Sire Conception Rate	0.7	96% Rel

MINUTE

001H015206 - PEAK MINUTE-ET

MARIUS x JEDI x BOMBERO



Producción

Mérito Neto	+\$753	Con.85%
Mérito Queso	+\$763	
Leche	+1796	
Grasa	+56	-0.04%
Proteína	+63	0.02%
Combinada Grasa y Proteína	+119	
Eficiencia Alimenticia Esperada	-121	Con.49%



Salud

Vida productiva	+4.7	
Tasa Permanencia en el Hato (LIV)	+1.0	
Permanencia en el hato de las vaquillas	+0.7	
Puntaje de Células Somáticas (SCS)	2.76	
Tasa de Preñez de las Hijas	-0.6	
Tasa Concepción Vaca	+0.7	
Tasa Concepción Vaquilla	-1.8	
Tasa Concepción Toro	N/A	N/A
PregCheck™	100	Con.90%
PregCheck+™	N/A	N/A
Consanguinidad Esperada	12.0%	



Parto

Fac. Parto	1.6%	Con.85%
Facilidad de Parto Hijas	1.5%	Con.72%
Muerte al nacer - toro	5.8%	Con.77%
Muerte al nacer - hijas	4.0%	Con.66%
Edad al primer parto	+2.1	

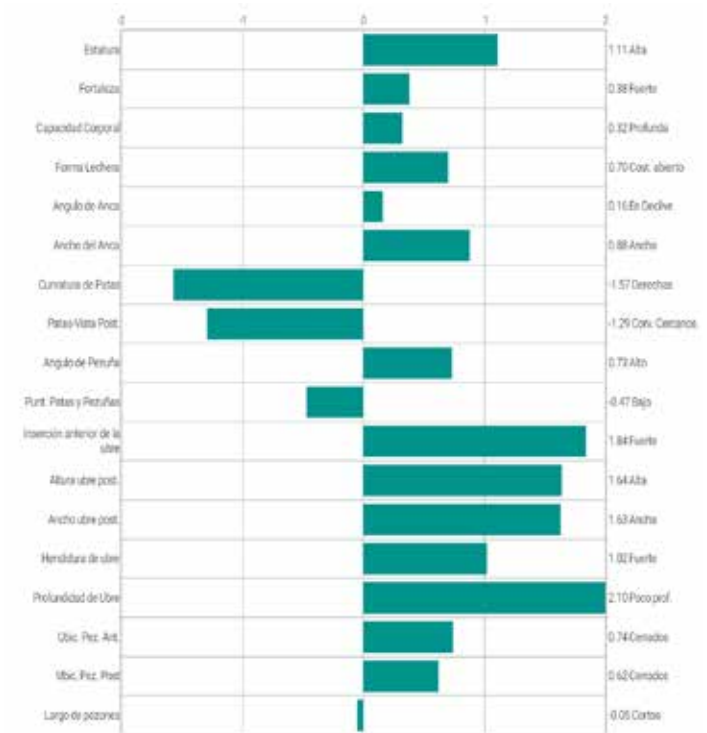
Número de Registro:	H0840003200824955
Fecha de Nacimiento:	2018-10-28
Estatus:	Inactivo
Prueba:	202312
Recesivos o Haplotipos:	TC,TD,TL,TP,TR,TV,TY, HMW0
Kappa Caseína:	BB
Beta Caseína:	A1A1
Número de Hijas:	187
Número de Hatos:	35
RHA%:	99%
DMS:	126,561
aAa:	234

Toro: PROGENESIS MARIUS

Madre: AURORA POLARIS

Abuelo Materno: S-S-I MONTROSS JEDI-ET

Bisabuelo Materno: RICHMOND-FD EL BOMBERO-ET



Conformación

TPI®	2738	
PTAT	1.05	Con.81%
Compuesto Ubre	1.53	
Compuesto Patas y Pezuñas	-0.94	
Compuesto Corporal	0.38	



BUZZARD

001HO13813 - 718006

SIEMERS FRAZZ BUZZARD-ET

HO840M003141495559 | DOB 06/20/2017

Kappa-Casein AB | **Beta-Casein** A2A2

Haplotypes HH1F HH2F HH3F HH4F HH5F HCDF HH6F
HMW0

Genetic Codes TC TD TL TP TR TV TY MWF

aAa 432 | **DMS** 345,135 | **EFI** 11.50%

Current Proof USA-202312

CDCB & HA-USA Genetic Evaluations 12/2023

Conformation

Based on 225 daughters in 68 herds (94% Rel)

	-2	-1	0	1	2		
PTAT						0.97	
UDC						1.79	
FLC						-0.74	
Stature						-0.31	Short
Strength						-0.02	Frail
Body Depth						-0.23	Shallow
Dairy form						0.30	Open
Rump Angle						-0.02	High Pins
Thurl Width						0.42	Wide
R. Legs-S View						-0.37	Posty
R. Legs-R View						-1.15	Hock In
Foot Angle						0.23	Steep
F&L Score						-0.69	Low
F. Udder Att.						1.71	Strong
R. Udder Ht.						2.23	High
R. Udder Wid.						1.73	Wide
Udder Cleft						1.13	Strong
Udder Depth						1.08	Shallow
F. Teat Place						0.64	Close
R. Teat Place						1.12	Close
Teat Length						0.17	Long

Pedigree

Sire	MELARRY JOSUPER FRAZZLED-ET
Dam	SIEMERS DELTA BROOKE-D7-ET
MGS	MR MOGUL DELTA 1427-ET
MGD	MAPEL WOOD MAN O MAN BROOKE
MGGS	LONG-LANGS OMAN OMAN-ET
MGGD	GEN-I-BEQ SHOTTLE BOMBI

ICC™

696

PREF	525	SUST	143	FERT	28
------	-----	------	-----	------	----

TPI 2701 NMS 712

Production

Milk	+984 Lbs	99% Rel
Protein	+42 Lbs	+0.04%
Fat	+76 Lbs	+0.13%
Feed Saved	+13	61% Rel
RobotX™	105	

Health Traits

Productive Life	+3.3	Daughter Pregnancy Rate	-0.7
Livability	+0.5	Cow Conception Rate	+0.6
Somatic Cell Score	+2.91	Heifer Conception Rate	+3.2
Mastitis	0.8%	Metritis	1.2%
Ketosis	2.3%	Displaced Abomasum	0.7%
Retained Placenta	-0.1%	Milk Fever	-0.4%

Calving Traits

Sire Calving Ease	2.2%	98% Rel	3410 Obs
Dtr Calving Ease	2.0%	95% Rel	1144 Obs 1059 dtr.
Sire Stillbirth	5.8%	96% Rel	3284 Obs
Daughter Stillbirth	4.5%	94% Rel	1107 Obs 1030 dtr.

Sire Fertility

PregCheck™	100	90% Rel
PregCheck+™	99	99% Rel
Sire Conception Rate	-0.2	93% Rel

MARVO

001H013896 - BLUMENFELD ACHV MARVO-ET
ACHIEVER x MODESTY x DAY



Producción

Mérito Neto	+\$854	Con.92%
Mérito Queso	+\$851	
Leche	+1063	
Grasa	+82	0.14%
Proteína	+22	-0.04%
Combinada Grasa y Proteína	+104	
Eficiencia Alimenticia Esperada	+342	Con.55%



Salud

Vida productiva	+5.3	
Tasa Permanencia en el Hato (LIV)	+2.9	
Permanencia en el hato de las vaquillas	+0.5	
Puntaje de Células Somáticas (SCS)	2.86	
Tasa de Preñez de las Hijas	+1.2	
Tasa Concepción Vaca	+3.1	
Tasa Concepción Vaquilla	+3.0	
Tasa Concepción Toro	N/A	N/A
PregCheck™	101	Con.94%
PregCheck+™	501: 103	Con.98%
Consanguinidad Esperada	9.9%	



Parto

Fac. Parto	1.4%	Con.98%
Facilidad de Parto Hijas	2.0%	Con.93%
Muerte al nacer - toro	4.4%	Con.95%
Muerte al nacer - hijas	4.2%	Con.93%
Edad al primer parto	+2.9	

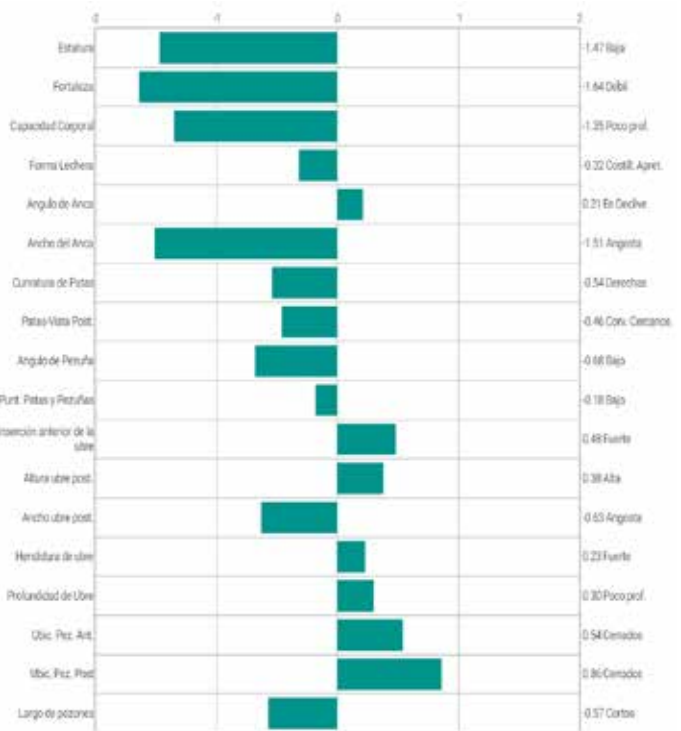
Número de Registro:	H0840003148092479
Fecha de Nacimiento:	2018-01-04
Estatus:	Inactivo
Prueba:	202312
Recesivos o Haplotipos:	TC,TD,TL,TP,TR,TV,TY, HMW0
Kappa Caseína:	BE
Beta Caseína:	A1A2
Número de Hijas:	2280
Número de Hatos:	202
RHA%:	99%
DMS:	345
aAa:	534

Toro: ABS ACHIEVER-ET

Madre: BLUMENFELD 4292 MOD 5334-ET

Abuelo Materno: BACON-HILL PETY MODESTY-ET

Bisabuelo Materno: MINNIGAN-HILLS DAY-ET



Conformación

TPI®	2662	
PTAT	-0.33	Con.91%
Compuesto Ubre	0.52	
Compuesto Patas y Pezuñas	0.04	
Compuesto Corporal	-1.73	



RYLAND-RED

001HO15647 - 718189

BOMAZ RYLAND-RED-ET

HO840M003212876551 | DOB 01/28/2020

Kappa-Casein BB | **Beta-Casein** A1A2

Haplotypes HH1F HH2F HH3F HH4F HH5F HCDF HH6F
HMW0

Genetic Codes TC TD TL TP TV TY MWF

aAa 423 | **DMS** 345,234 | **EFI** 11.90%

Current Proof USA-202312

CDCB & HA-USA Genetic Evaluations 12/2023

Conformation

Based on - daughters in - herds (80% Rel)

	-2	-1	0	1	2		
PTAT						1.11	
UDC						1.49	
FLC						0.91	
Stature						0.35	Tall
Strength						-0.74	Frail
Body Depth						-0.63	Shallow
Dairy form						0.60	Open
Rump Angle						0.21	Sloped
Thurl Width						0.57	Wide
R. Legs-S View						1.64	Sickle
R. Legs-R View						0.90	Straight
Foot Angle						0.58	Steep
F&L Score						1.01	High
F. Udder Att.						1.81	Strong
R. Udder Ht.						1.80	High
R. Udder Wid.						1.13	Wide
Udder Cleft						0.66	Strong
Udder Depth						1.68	Shallow
F. Teat Place						0.93	Close
R. Teat Place						0.72	Close
Teat Length						0.45	Long

Pedigree

Sire	HOOGERHORST DG OH RUBELS-RED
Dam	BOMAZ SALVATORE 98661-ET
MGS	MR SALVATORE RC-ET
MGD	BOMAZ SILVER 6777-ET
MGGS	SEAGULL-BAY SILVER-ET
MGGD	BOMAZ SUPERSIRE 6071-ET

ICC™

787

PREF	472	SUST	316	FERT	-1
------	-----	------	-----	------	----

TPI 2637 NMS 736

Production

Milk	+1143 Lbs	82% Rel
Protein	+38 Lbs	+0.01%
Fat	+37 Lbs	-0.02%
Feed Saved	+270	46% Rel
RobotX™	94	

Health Traits

Productive Life	+6.1	Daughter Pregnancy Rate	-0.3
Livability	+3.1	Cow Conception Rate	+0.1
Somatic Cell Score	+2.71	Heifer Conception Rate	+0.5
Mastitis	1.5%	Metritis	2.3%
Ketosis	2.0%	Displaced Abomasum	0.7%
Retained Placenta	-0.1%	Milk Fever	0.2%

Calving Traits

Sire Calving Ease	2.0%	89% Rel	394 Obs
Dtr Calving Ease	2.1%	70% Rel	0 Obs 0 dtr.
Sire Stillbirth	6.3%	83% Rel	393 Obs
Daughter Stillbirth	4.5%	64% Rel	0 Obs 0 dtr.

Sire Fertility

PregCheck™	100	84% Rel
PregCheck+™	100	88% Rel
Sire Conception Rate	0.0	78% Rel

DAVINE-P

001H015418 - BOMAZ DAVINE-P-ET

AltaDELSON P x MEDLEY x ALTACASUAL



Producción

Mérito Neto	+\$692	Con.81%
Mérito Queso	+\$707	
Leche	+243	
Grasa	+44	0.12%
Proteína	+22	0.05%
Combinada Grasa y Proteína	+66	
Eficiencia Alimenticia Esperada	+134	Con.46%



Salud

Vida productiva	+5.8	
Tasa Permanencia en el Hato (LIV)	+5.2	
Permanencia en el hato de las vaquillas	+0.1	
Puntaje de Células Somáticas (SCS)	2.69	
Tasa de Preñez de las Hijas	+1.9	
Tasa Concepción Vaca	+3.6	
Tasa Concepción Vaquilla	+3.6	
Tasa Concepción Toro	N/A	N/A
PregCheck™	96	Con.79%
PregCheck+™	501:97	Con.94%
Consanguinidad Esperada	11.5%	



Parto

Fac. Parto	2.4%	Con.92%
Facilidad de Parto Hijas	2.3%	Con.70%
Muerte al nacer - toro	5.8%	Con.84%
Muerte al nacer - hijas	5.0%	Con.65%
Edad al primer parto	+2.5	

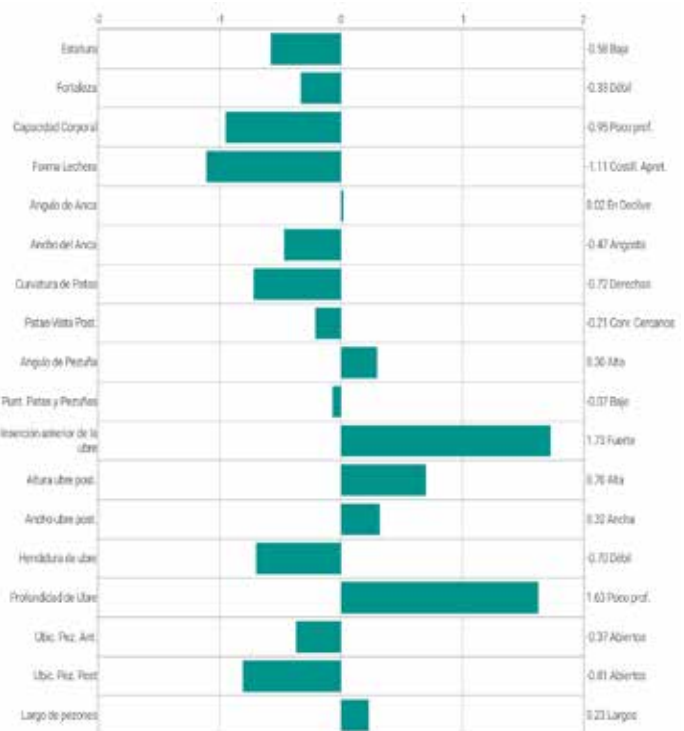
Número de Registro:	H0840003206094039
Fecha de Nacimiento:	2019-06-26
Estatus:	Inactivo
Prueba:	202312
Recesivos o Haplotipos:	PC,PO,TC,TD,TL,TR,TV,TY, HMWO
Kappa Caseína:	BB
Beta Caseína:	A2A2
Número de Hijas:	57
Número de Hatos:	16
RHA%:	99%
DMS:	345,234
aAa:	324

Toro: BOMAZ ALTADELSON P-ET

Madre: BOMAZ MEDLEY 8075-ET

Abuelo Materno: ABS MEDLEY-ET

Bisabuelo Materno: SCHREUR ALTACASUAL P



Conformación

TPI®	2616	
PTAT	0.29	Con.80%
Compuesto Ubre	0.95	
Compuesto Patas y Pezuñas	0.03	
Compuesto Corporal	-0.01	

HYFLOW

001HO13471 - NO-FLA HYFLOW-ET

RAGEN x JOSUPER x MASSEY



Producción

Mérito Neto	+\$667	Con.93%
Mérito Queso	+\$671	
Leche	+2197	
Grasa	+26	-0.19%
Proteína	+72	0.01%
Combinada Grasa y Proteína	+98	
Eficiencia Alimenticia Esperada	+0	Con.55%



Salud

Vida productiva	+5.0	
Tasa Permanencia en el Hato (LIV)	+0.5	
Permanencia en el hato de las vaquillas	+1.2	
Puntaje de Células Somáticas (SCS)	2.98	
Tasa de Preñez de las Hijas	-0.5	
Tasa Concepción Vaca	-0.4	
Tasa Concepción Vaquilla	-1.6	
Tasa Concepción Toro	N/A	N/A
PregCheck™	99	Con.92%
PregCheck+™	501: 98	Con.99%
Consanguinidad Esperada	9.6%	



Parto

Fac. Parto	1.9%	Con.99%
Facilidad de Parto Hijas	2.5%	Con.96%
Muerte al nacer - toro	6.5%	Con.97%
Muerte al nacer - hijas	5.5%	Con.96%
Edad al primer parto	+8.1	

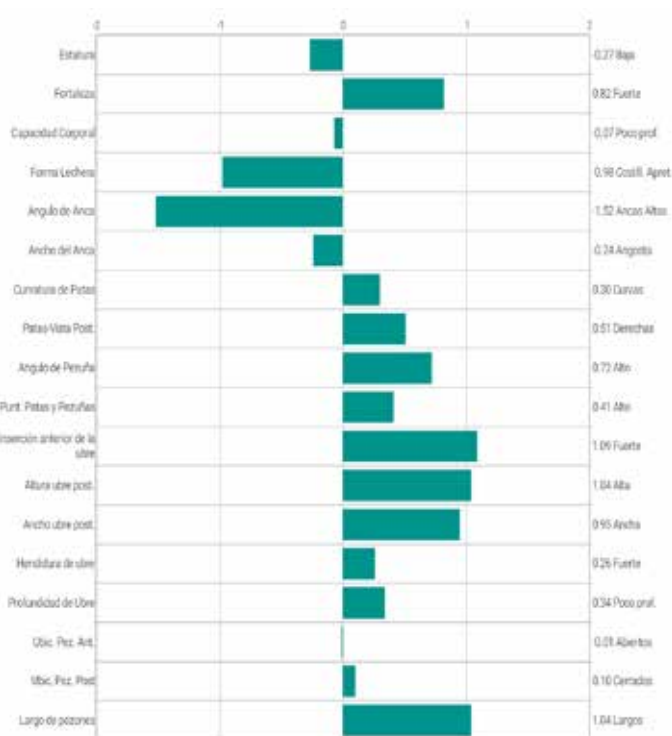
Número de Registro:	HO840003141560227
Fecha de Nacimiento:	2017-02-12
Estatus:	Inactivo
Prueba:	202312
Recesivos o Haplotipos:	TC,TD,TL,TP,TR,TV,TY, HMWF, HMWO
Kappa Caseína:	AA
Beta Caseína:	A1A2
Número de Hijas:	4535
Número de Hatos:	424
RHA%:	99%
DMS:	345,135
aAa:	435

Toro: FAIRMONT STOIC RAGEN-ET

Madre: NO-FLA JOSUPER TRI 41039-ET

Abuelo Materno: UECKER SUPERSIRE JOSUPER-ET

Bisabuelo Materno: CO-OP BOSSIDE MASSEY-ET



Conformación

TPI®	2611	
PTAT	0.60	Con.94%
Compuesto Ubre	0.79	
Compuesto Patas y Pezuñas	0.54	
Compuesto Corporal	0.94	

WHISKER

001H013814 - T-SPRUCE FRAZZLE WHISKER-ET

FRAZZLED x AltaSPRING x SHAN



Producción

Mérito Neto	+\$718	Con.93%
Mérito Queso	+\$717	
Leche	+1917	
Grasa	+52	-0.07%
Proteína	+46	-0.05%
Combinada Grasa y Proteína	+98	
Eficiencia Alimenticia Esperada	+101	Con.59%



Salud

Vida productiva	+5.1	
Tasa Permanencia en el Hato (LIV)	+1.6	
Permanencia en el hato de las vaquillas	+1.0	
Puntaje de Células Somáticas (SCS)	2.70	
Tasa de Preñez de las Hijas	-1.5	
Tasa Concepción Vaca	-0.1	
Tasa Concepción Vaquilla	+4.3	
Tasa Concepción Toro	N/A	N/A
PregCheck™	100	Con.93%
PregCheck+™	N/A	N/A
Consanguinidad Esperada	11.0%	



Parto

Fac. Parto	2.0%	Con.98%
Facilidad de Parto Hijas	2.2%	Con.93%
Muerte al nacer - toro	5.2%	Con.95%
Muerte al nacer - hijas	4.0%	Con.93%
Edad al primer parto	+3.6	

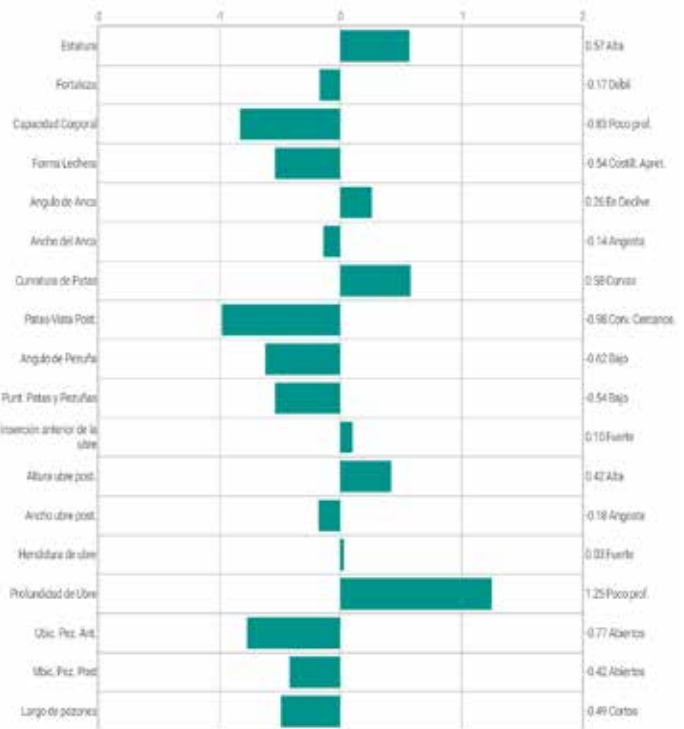
Número de Registro:	H0840003142490321
Fecha de Nacimiento:	2017-06-01
Estatus:	Inactivo
Prueba:	202312
Recesivos o Haplotipos:	TC,TD,TL,TP,TR,TY, HMW0
Kappa Caseína:	AA
Beta Caseína:	A2A2
Número de Hijas:	1948
Número de Hatos:	294
RHA%:	99%
DMS:	345
aAa:	423

Toro: MELARRY JOSUPER FRAZZLED-ET

Madre: MELARRY SPRING 9500-ET

Abuelo Materno: WESTENRADE ALTASPRING

Bisabuelo Materno: LADYS-MANOR MAN-O-SHAN-ET



Conformación

TPI®	2527	
PTAT	-0.41	Con.94%
Compuesto Ubre	0.16	
Compuesto Patas y Pezuñas	-0.83	
Compuesto Corporal	0.17	



TETHRA

001H011913 - 713075

CO-OP AARDEMA TETHRA-ET

HO840M003129037617 | DOB 02/18/2015

Kappa-Casein AA | **Beta-Casein** A2A2

Haplotypes HH1F HH2F HH3F HH4F HH5F HCDF HH6F
HMW1

Genetic Codes TC TD TL TP TR TV TY MWC

aAa 432 | **DMS** 345,234 | **EFI** 10.90%

Current Proof USA-202312

CDCB & HA-USA Genetic Evaluations 12/2023

Conformation

Based on 511 daughters in 171 herds (93% Rel)

	-2	-1	0	1	2		
PTAT						0.58	
UDC						0.88	
FLC						-0.30	
Stature						0.13	Tall
Strength						0.89	Strong
Body Depth						0.00	Deep
Dairy form						-0.70	Tight
Rump Angle						-0.18	High Pins
Thurl Width						0.89	Wide
R. Legs-S View						-0.04	Posty
R. Legs-R View						-0.80	Hock In
Foot Angle						0.35	Steep
F&L Score						-0.14	Low
F. Udder Att.						0.87	Strong
R. Udder Ht.						1.48	High
R. Udder Wid.						1.47	Wide
Udder Cleft						0.29	Strong
Udder Depth						0.44	Shallow
F. Teat Place						-1.12	Wide
R. Teat Place						-0.58	Wide
Teat Length						-0.17	Short

Pedigree

Sire	UECKER SUPERSIRE JOSUPER-ET
Dam	CO-OP UNO YOYO 6883-ET
MGS	AMIGHETTI NUMERO UNO ET
MGD	CO-OP BOLIVER YOYO-ET
MGGS	END-ROAD PVF BOLIVER-ET
MGGD	COYNE-FARMS YELENA CRI ET TV

ICC™

472

PREF	387	SUST	79	FERT	6
------	-----	------	----	------	---

TPI 2525 NMS 496

Production

Milk	+1816 Lbs	99% Rel
Protein	+43 Lbs	-0.04%
Fat	+58 Lbs	-0.04%
Feed Saved	-162	60% Rel
RobotX™	106	

Health Traits

Productive Life	+1.9	Daughter Pregnancy Rate	-0.9
Livability	-1.5	Cow Conception Rate	+0.1
Somatic Cell Score	+2.81	Heifer Conception Rate	+2.1
Mastitis	-0.1%	Metritis	0.0%
Ketosis	0.9%	Displaced Abomasum	0.8%
Retained Placenta	-0.4%	Milk Fever	-0.1%

Calving Traits

Sire Calving Ease	2.0%	99% Rel	5177 Obs
Dtr Calving Ease	2.9%	95% Rel	1510 Obs 1475 dtr.
Sire Stillbirth	6.2%	96% Rel	5489 Obs
Daughter Stillbirth	6.2%	95% Rel	1344 Obs 1425 dtr.

Sire Fertility

PregCheck™	100	81% Rel
PregCheck+™	-	
Sire Conception Rate	-	



LÍNEA GENÉTICA DEL HATO

Jersey

GENEX



¡Genética hoy para las generaciones del mañana!

El ICC™ elimina las dudas de sus decisiones genéticas. Está respaldado por una ciencia sólida y elaborado con una cuidadosa consideración del impacto económico a nivel del establo y de la selección genética. El ICC™ prepara a las vacas del mañana para que tengan un buen rendimiento a través de una selección equilibrada para la producción eficiente, la sustentabilidad y la fertilidad. El ICC™ se centra en lo que hace que sus vacas sean realmente rentables y sustentables y, por lo tanto, incluye los rasgos que le importan a usted, a su hato y a su futuro.

44%

Maximizador Queso (ChMAX)

Centrado en el rendimiento total de los componentes con igual peso de grasa y proteína.



36%

Sostenibilidad (SUST)

Selecciona por longevidad y salud en general, incluyendo rasgos que se centran en una buena etapa de transición, calidad de leche y ubres fundacionales.

20%

Fertilidad y Desempeño (FERT)

Enfatiza la selección de vaquillas y vacas por fertilidad para lograr una edad óptima al primer parto.



HENDRIX {4}

001JE07343 - 727077

JX VIERRA HENDRIX {4}-ET

JE840M003209748346 | DOB 02/29/2020

Kappa-Casein BB | **Beta-Casein** A1A2

Haplotypes JHIF JNSF

Genetic Codes JNSF

aAa 432 | **DMS** 126,123 | **EFI** 6.60%

Current Proof USA-202312

CDCB & HA-USA Genetic Evaluations 12/2023

Conformation

Based on - daughters in - herds (80% Rel)

	-2	-1	0	1	2		
PTAT						0.20	
JUI						5.96	
Stature						0.90	Tall
Strength						1.10	Strong
Dairy form						0.40	Open
Rump Angle						0.30	Sloped
Thurl Width						0.90	Wide
R. Legs-S View						0.10	Sickle
Foot Angle						0.10	Steep
F. Udder Att.						0.50	Strong
R. Udder Ht.						-1.10	Low
R. Udder Wid.						-0.40	Narrow
Udder Cleft						-0.20	Weak
Udder Depth						-0.40	Deep
F. Teat Place						-0.20	Wide
R. Teat Place						-0.20	Wide
Teat Length						0.10	Long

Pedigree

Sire	JX SUN VALLEY JAYWALK {6}-ET
Dam	JX TWINRIDGE FEARLESS {3}-ET
MGS	JX AARDEMA DELUCA {3}
MGD	JX AARDEMA 54614 {2}
MGGS	JX FARIA BROTHERS VANDRELL {2}
MGGD	JX AARDEMA 42749 {1}

ICC™

650

ChMAX	518	SUST	120	FERT	12
-------	-----	------	-----	------	----

JPI 165 **NMS** 608

Production

Milk	+1539 Lbs	78% Rel
Protein	+60 Lbs	+0.02%
Fat	+64 Lbs	-0.05%
RobotX™	95	

Health Traits

Productive Life	+3.1	Daughter Pregnancy Rate	-0.1
Livability	+0.8	Cow Conception Rate	+0.0
Somatic Cell Score	+2.85	Heifer Conception Rate	+0.1
Mastitis	-0.3%	Metritis	0.1%
Ketosis	-0.1%	Displaced Abomasum	0.1%
Retained Placenta	-0.2%	Milk Fever	0.2%

Sire Fertility

PregCheck™	103	86% Rel
PregCheck+™	105	99% Rel
Sire Conception Rate	-	

DREAMCHASER {5}

001JE07294 - JX PEAK DREAMCHASER {5}-ET

AltaSABAN {4} x GOT MAID x CITATION



Número de Registro:	JE840003215564967
Fecha de Nacimiento:	2020-10-04
Estatus:	Inactivo
Prueba:	202312
Recesivos o Haplotipos:	JNSF
Kappa Caseína:	BB
Beta Caseína:	A2A2
BBR:	100%
aAa:	624

Toro: JX FARIA BROTHERS ALTASABAN {4}-ET

Madre: JX SUNSET CANYON DAFFODIL {6}

Abuelo Materno: JX SUNSET CANYON GOT MAID {5}-

Bisabuelo Materno: BW CITATION A-ET



Producción

Mérito Neto	+\$464	Con.74%
Mérito Queso	+\$471	
Leche	+792	
Grasa	+55	0.08%
Proteína	+33	0.02%
Combinada Grasa y Proteína	+88	



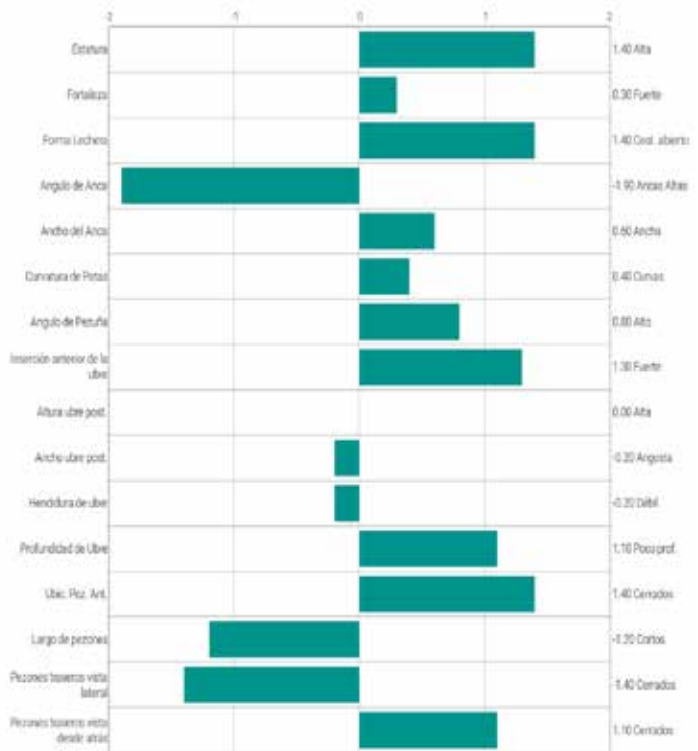
Salud

Vida productiva	+2.1	
Tasa Permanencia en el Hato (LIV)	+0.7	
Permanencia en el hato de las vaquillas	-0.3	
Puntaje de Células Somáticas (SCS)	2.86	
Tasa de Preñez de las Hijas	-0.1	
Tasa Concepción Vaca	+0.4	
Tasa Concepción Vaquilla	+1.2	
Tasa Concepción Toro	N/A	N/A
PregCheck™	101	Con.80%
PregCheck+™	501: 94	Con.91%
Consanguinidad Esperada	7.7%	



Parto

Edad al primer parto	+2.4
----------------------	------



Conformación

JPI™	127	
PTAT	0.90	Con.80%
Jersey Udder Index™	11.8	

TORYN {5}

001JE07108 - JX FARIA BROTHERS TORYN {5}-ET
ZINC {5} x JX LEONEL {3} x MAGNUM



Producción

Mérito Neto	+\$474	Con.91%
Mérito Queso	+\$475	
Leche	+1344	
Grasa	+48	-0.08%
Proteína	+49	0.00%
Combinada Grasa y Proteína	+97	



Salud

Vida productiva	+1.8	
Tasa Permanencia en el Hato (LIV)	+0.7	
Permanencia en el hato de las vaquillas	-0.5	
Puntaje de Células Somáticas (SCS)	3.18	
Tasa de Preñez de las Hijas	-1.2	
Tasa Concepción Vaca	-1.2	
Tasa Concepción Vaquilla	+1.1	
Tasa Concepción Toro	+0.5	Con.N/A%
PregCheck™	101	Con.91%
PregCheck+™	501: 103	Con.99%
Consanguinidad Esperada	5.9%	



Parto

Edad al primer parto	+3.5
----------------------	------

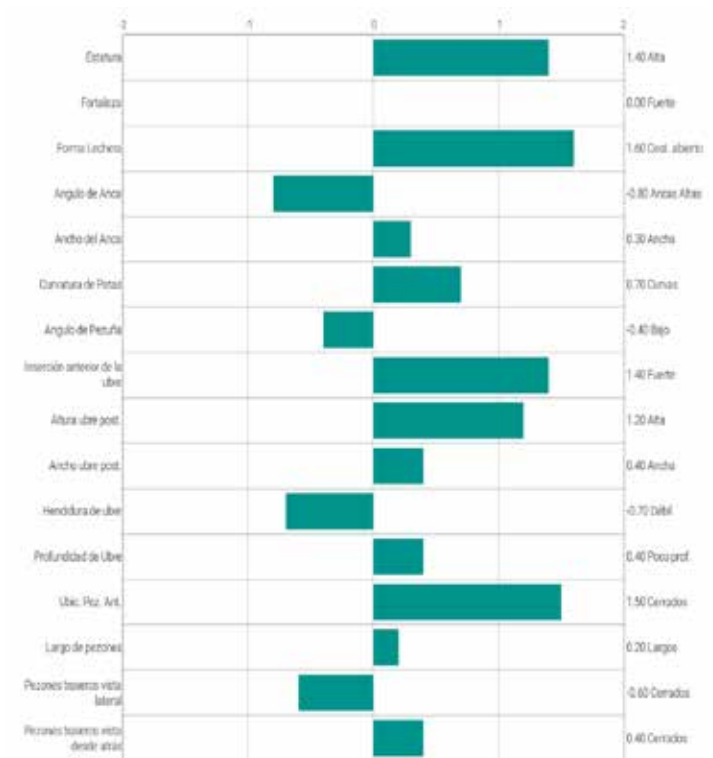
Número de Registro:	JE840003200650040
Fecha de Nacimiento:	2019-02-24
Estatus:	Inactivo
Prueba:	202312
Kappa Caseína:	BB
Beta Caseína:	A2A2
BBR:	93%
aAa:	423

Toro: JX PVF WC ZINC {5}-ET

Madre: JX FARIA BROTHERS LEONEL 297210 {4}

Abuelo Materno: JX FARIA BROTHERS LEONEL {3}-E

Bisabuelo Materno: WILSONVIEW JEVON MAGNUM-ET



Conformación

JPI™	103	
PTAT	1.30	Con.87%
Jersey Udder Index™	14.2	

DAILY DOUBLE {6}

001JE07160 - PINE-TREE DAILY DOUBLE {6}-ET
CRAZE x WORLD CUP {4} x CHISEL



Producción

Mérito Neto	+\$401	Con.78%
Mérito Queso	+\$409	
Leche	+652	
Grasa	+48	0.07%
Proteína	+35	0.05%
Combinada Grasa y Proteína	+83	



Salud

Vida productiva	+2.1	
Tasa Permanencia en el Hato (LIV)	+2.2	
Permanencia en el hato de las vaquillas	-0.1	
Puntaje de Células Somáticas (SCS)	3.03	
Tasa de Preñez de las Hijas	-0.9	
Tasa Concepción Vaca	-0.9	
Tasa Concepción Vaquilla	+2.0	
Tasa Concepción Toro	N/A	N/A
PregCheck™	101	Con.48%
PregCheck+™	501: 97	Con.77%
Consanguinidad Esperada	8.4%	



Parto

Edad al primer parto	+3.6
----------------------	------

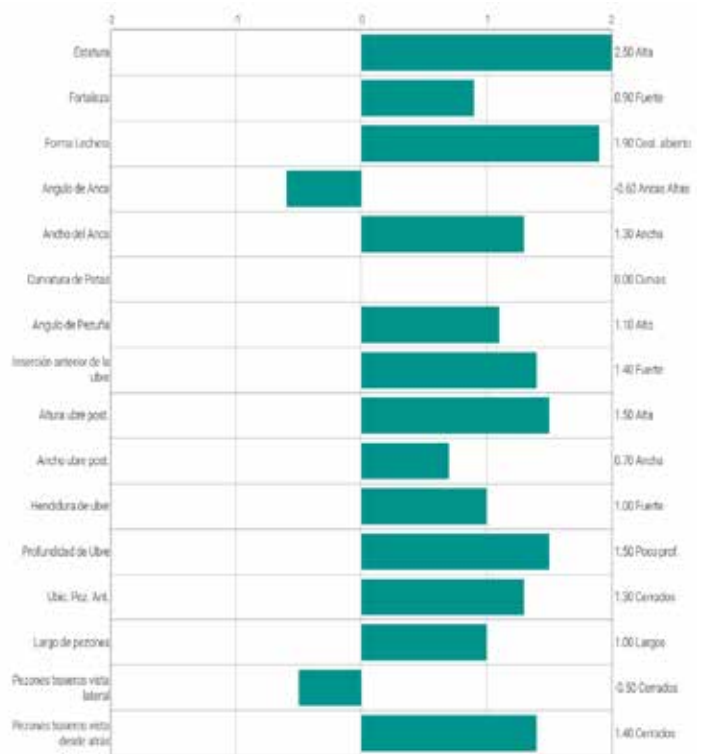
Número de Registro:	JEUSA000075812124
Fecha de Nacimiento:	2019-07-06
Estatus:	Inactivo
Prueba:	202312
Recesivos o Haplotipos:	JNSF
Kappa Caseína:	BB
Beta Caseína:	A2A2
BBR:	100%
aAa:	432

Toro: RIVER VALLEY CIRCUS CRAZE-ET

Madre: JX PINE-TREE WORLD CUP DELLIA {5}-ET

Abuelo Materno: JX CO-OP AD WORLD CUP {4}-ET

Bisabuelo Materno: SHAN-MAR HILARIO CHISEL-ET



Conformación

JPI™	97	
PTAT	1.60	Con.82%
Jersey Udder Index™	16.8	

LINDORZ {4}

001JE07054 - JX CO-OP LINDORZ {4}-ET

ACHIEVER {3} x WORLD CUP {4} x PROP JOE {3}



Producción

Mérito Neto	+\$338	Con.82%
Mérito Queso	+\$343	
Leche	+620	
Grasa	+28	-0.01%
Proteína	+26	0.01%
Combinada Grasa y Proteína	+54	



Salud

Vida productiva	+2.6	
Tasa Permanencia en el Hato (LIV)	+2.6	
Permanencia en el hato de las vaquillas	+0.6	
Puntaje de Células Somáticas (SCS)	2.95	
Tasa de Preñez de las Hijas	-0.1	
Tasa Concepción Vaca	-0.1	
Tasa Concepción Vaquilla	+3.5	
Tasa Concepción Toro	N/A	N/A
PregCheck™	97	Con.67%
PregCheck+™	501: 96	Con.97%
Consanguinidad Esperada	6.9%	



Parto

Edad al primer parto	+3.3
----------------------	------

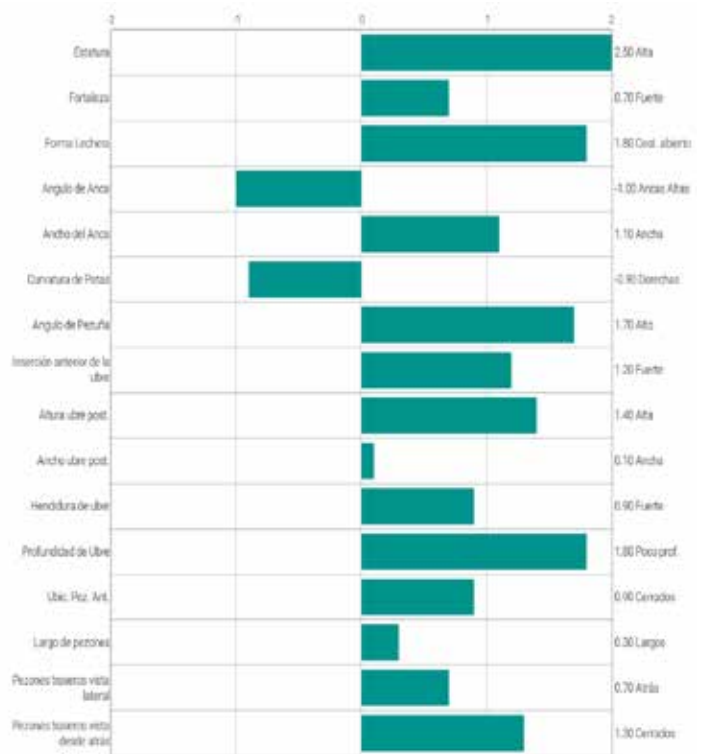
Número de Registro:	JE840003205030381
Fecha de Nacimiento:	2019-03-01
Estatus:	Inactivo
Prueba:	202312
Recesivos o Haplotipos:	JNSF
Kappa Caseína:	BB
Beta Caseína:	A2A2
BBR:	91%
aAa:	243

Toro: JX PINE-TREE ACHIEVER {3}-ET

Madre: JX CO-OP 64006 {5}

Abuelo Materno: JX CO-OP AD WORLD CUP {4}-ET

Bisabuelo Materno: JX FARIA BROTHERS PROP JOE {3}-ET



Conformación

JPI™	91	
PTAT	1.60	Con.80%
Jersey Udder Index™	16.6	



LÍNEA GENÉTICA DEL HATO

Pardo Suizo

GENEX™



FRESNO

001BS00712 - 733829

RICHMOND-FD FRESNO ET

BS840M003224632624 | DOB 07/09/2021

Kappa-Casein BB | **Beta-Casein** A2A2

Haplotypes BH2F

Genetic Codes

aAa 162 | **DMS** 246,126 | **EFI** 8.00%

Current Proof USA-202312

CDCB & HA-USA Genetic Evaluations 12/2023

Conformation

Based on - daughters in - herds (66% Rel)

	-2	-1	0	1	2		
PTAT						0.50	
UDC						0.54	
FLC						0.30	
Stature						-0.30	Short
Strength						-0.20	Frail
Body Depth						-0.30	Shallow
Dairy form						0.40	Open
Rump Angle						0.00	Sloped
Thurl Width						-0.50	Narrow
R. Legs-S View						-0.20	Posty
R. Legs-R View						0.20	Straight
Foot Angle						0.40	Steep
F. Udder Att.						0.80	Strong
R. Udder Ht.						0.90	High
R. Udder Wid.						1.00	Wide
Udder Cleft						-0.40	Weak
Udder Depth						-0.20	Deep
F. Teat Place						0.20	Close
Teat Length						0.00	Long

Pedigree

Sire	PINE-TREE ALTAFIZZY ETV
Dam	RICHMOND-FD D HOUSTON
MGS	JO-LANE DARIO HILTON ET *TM
MGD	RICHMOND-FD DALLAS
MGGS	HILLTOP ACRES DRIVER ET(D)*TM

TPI 151 NMS 536

Production

Milk	+1037 Lbs	65% Rel
Protein	+44 Lbs	+0.04%
Fat	+62 Lbs	+0.08%
RobotX™		

Health Traits

Productive Life	+0.4	Daughter Pregnancy Rate	-0.6
Livability	-1.4	Cow Conception Rate	+2.6
Somatic Cell Score	+2.92	Heifer Conception Rate	+3.0
Mastitis	-0.8%	Metritis	0.1%
Ketosis	0.2%	Displaced Abomasum	0.1%
Retained Placenta	0.1%	Milk Fever	0.0%

Calving Traits

Sire Calving Ease	2.0%	60% Rel	10 Obs
Dtr Calving Ease	2.5%	59% Rel	0 Obs 0 dtr.
Sire Stillbirth	-	0% Rel	0 Obs
Daughter Stillbirth	-	0% Rel	0 Obs 0 dtr.

Sire Fertility

PregCheck™	-
PregCheck+™	-
Sire Conception Rate	-



POE

001BS00713 - 733863

DAN-ASHLEY POE ET

BS840M003236268237 | DOB 07/27/2021

Kappa-Casein BB | **Beta-Casein** A2A2

Haplotypes BH2F

Genetic Codes

aAa 234 | **DMS** 246,126 | **EFI** 7.20%

Current Proof USA-202312

CDCB & HA-USA Genetic Evaluations 12/2023

Conformation

Based on - daughters in - herds (65% Rel)

	-2	-1	0	1	2		
PTAT						0.00	
UDC						-0.06	
FLC						0.10	
Stature						-1.70	Short
Strength						-0.20	Frail
Body Depth						0.00	Deep
Dairy form						-0.10	Tight
Rump Angle						-0.40	High Pins
Thurl Width						-0.50	Narrow
R. Legs-S View						-0.10	Posty
R. Legs-R View						0.20	Straight
Foot Angle						0.30	Steep
F. Udder Att.						0.10	Strong
R. Udder Ht.						-0.60	Low
R. Udder Wid.						0.20	Wide
Udder Cleft						0.20	Strong
Udder Depth						-0.20	Deep
F. Teat Place						-0.40	Wide
Teat Length						-0.40	Short

Pedigree

Sire	Portmann BS Bays JONMAR
Dam	DAN-ASHLEY STANDOUT PAULA
MGS	MEADO-BROOK SAGES STANDOUT
MGD	DAN-ASHLEY CADENCE-KARIZMA
MGGS	SHILOH BROOKNGS CADENCE ET *TM

TPI 96 NMS 433

Production

Milk	+1233 Lbs	64% Rel
Protein	+32 Lbs	-0.04%
Fat	+31 Lbs	-0.08%
RobotX™		

Health Traits

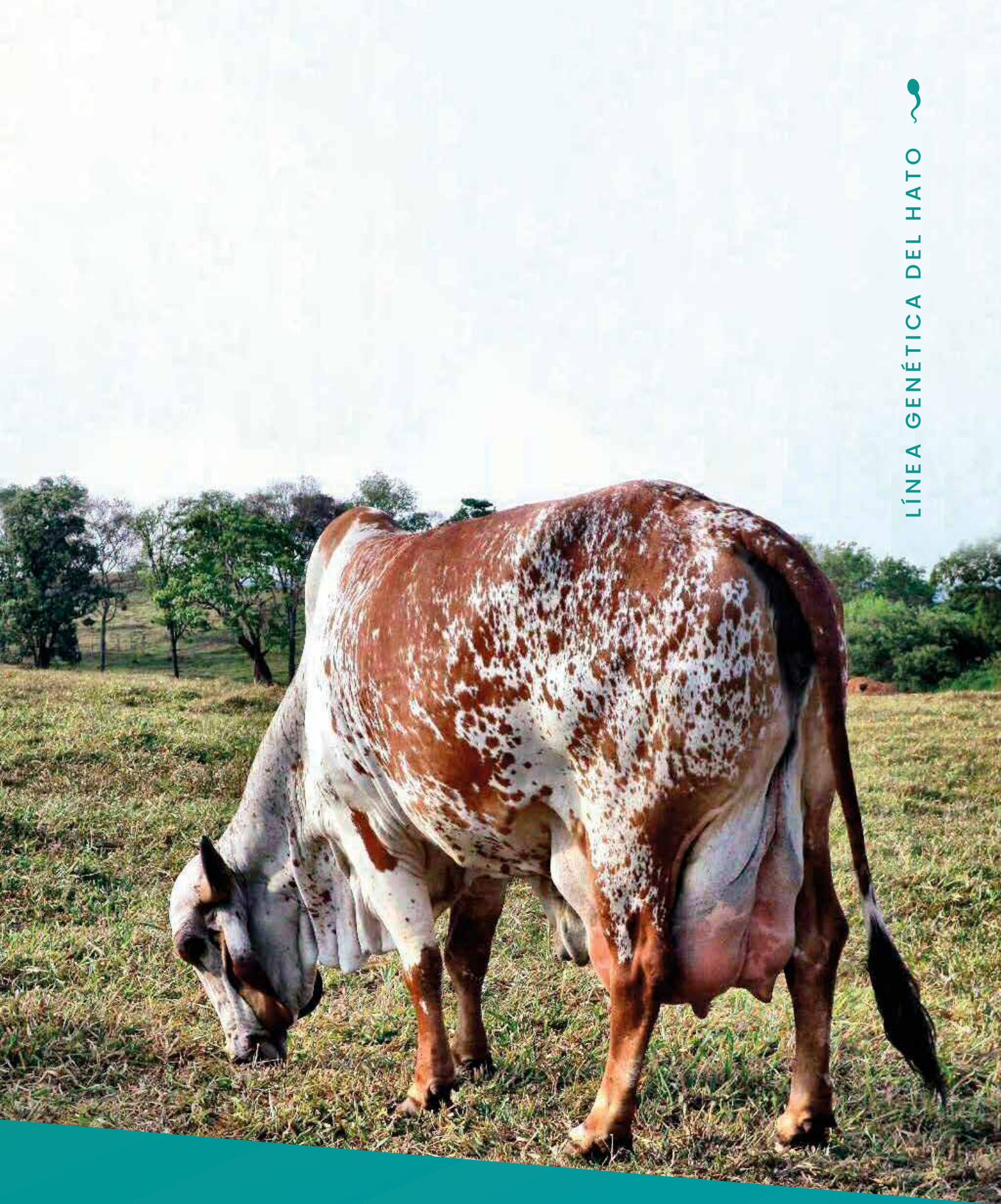
Productive Life	+3.2	Daughter Pregnancy Rate	-1.6
Livability	+0.1	Cow Conception Rate	-2.7
Somatic Cell Score	+2.74	Heifer Conception Rate	+0.2
Mastitis	0.5%	Metritis	-0.1%
Ketosis	0.2%	Displaced Abomasum	0.1%
Retained Placenta	0.2%	Milk Fever	0.0%

Calving Traits

Sire Calving Ease	2.0%	43% Rel	0 Obs
Dtr Calving Ease	2.9%	39% Rel	0 Obs 0 dtr.
Sire Stillbirth	-	0% Rel	0 Obs
Daughter Stillbirth	-	0% Rel	0 Obs 0 dtr.

Sire Fertility

PregCheck™	-
PregCheck+™	-
Sire Conception Rate	-



LÍNEA GENÉTICA DEL HATO 

Zebú

GENEX 



5269-BP FILHA



EVPF 625 FILHA

Informações Gerais

Nome: EDANK TE JABAQUARA

Nasc: 09/08/2013

Proprietário: AGROPECUÁRIA JABAQUARA LTDA, ESTÂNCIA QUALYTÁ E...

PTA Leite: PROVADO PTAL: 963

Kappa Caseína: AB

Registro: EVPF444

Criador: ELIO VIRGINIO PIMENTEL - FAZENDA JABAQUARA

Lactação da Mãe: 20.018 Kg em 365 dias

Beta Caseína: A1A2

Beta Lacto: BB

Pedigree - TABU TE CAL x JAGUAR TE DO GAVIAO

Pai

TABU TE CAL
CAL 6557

Avô Paterno

RADAR DOS POCOES

Avó Paterna

JULIANA CAL

Mãe

HIRANA FIV DE BRAS.
RRP 6393

Avô Materno

JAGUAR TE DO GAVIAO

Avó Materna

ORDENHA TE DE BRAS

PNMGL - 2023

PNMGL 2023	PTA	CONF (%)	ABCZ 2020		
Leite	963	85	ALTG	--	--
Idade ao Primeiro Parto	-36	80	COMP	--	--
NF		7	PERT	--	--
NR		4	ANGG	--	--
Gordura Kg	--	--	COMG	--	--
Gordura %	--	--	LIL	--	--
Proteína Kg	--	--	LIS	--	--
Proteína %	--	--	POSL	--	--
Sólidos Totais Kg	--	--	POST	--	--
Sólidos Totais %	--	--	ANGC	--	--
			PU	--	--
			LUP	--	--
			LA	--	--
			COMPT	--	--
			AUP	--	--
			LC	--	--
			DIATE	--	--
			TEMP	--	--
			FAC ORD	--	--
			UMBIGO	--	--
			PELE	--	--



QUELINHA Everett FIV 2B - mãe

Informações Gerais

Nome: LEGADO FIV TANGO 2B DA MIRÁI

Nasc: 20/05/2016

Proprietário: ALEXANDRE LACERDA E AGRONEGÓCIOS 2B

Beta Caseína: A2A2

Beta Lacto: AB

Registro: 8636-AS

Criador: ALEXANDRE LACERDA

Lactação da Mãe: 21.385 Kg em 365 dias

Kappa Caseína: AA

PTAL: EM TESTE -2025

Pedigree - undefined

Pai

MR WELCOME HILL TANGO-ET

Avô Paterno

LOTTA-HILL SHOTTLE 41-ET

Avô Paterna

MS WELCOME COLBY TAYA-ET

Mãe

QUELINHA EVERETT FIV 2B

Avô Materno

NOR-HERT EMERSON EVERETT-ET

Avô Materna

MÁGICA FADA 4 FIV 2B

SUMÁRIO TOUROS PMGG - 2023

PMGG 2023	PTA	CONF (%)	PROGÊNIE	
PTA Leite	--	--	NF	--
PTA Leite Genômico	1707	76	NR	--
Intervalo de Parto	0	37		
Idade Primeiro Parto	-36	72		
Longevidade	0.4	0.4		
TE	--	--		
GPTA PN	-0.2	80		
GPTA PG	0	90		
IPPLG	-0.2	--		
IETG	-0.3	--		
IFPG	-0.7	--		
IRG	-0.7	--		
CPLFG	1.1	--		



LÍNEA GENÉTICA DEL HATO

Beef on Dairy

GENEX



BIG DADDY

BIG DADDY

001AN01369 - 717430

18025243 | DOB 09/04/2014

PEDIGREE

HOOVER DAM	}	SYDGEN C C & 7
	}	ERICA OF ELLSTON C124
QHF BLACKCAP 6E2 OF4V16 4355	}	IDEAL 4355 OF OT26 2440
	}	QHF BLACKCAP 4V16 OF 1H8

BULL INFORMATION

Birth Weight (lbs)	65
205 Day Weight (lbs)	780
365 Day Weight (lbs)	1480
Scrotal	38.7 cm. @ 12 mos.
PregCheck	98

EPDS

American Angus Association - 2/2023

	Production								Maternal					
	CED	BW	WW	YW	RADG	DMI	YH	SC	HPG	CEM	Milk	MW	MH	\$EN
EPD	10	0.0	58	98	0.22	0.72	0.2	0.57	3.7	9	29	48	-0.3	-14.00
ACC	0.36	0.50	0.44	0.40	0.35	0.35	0.45	0.42	0.27	0.36	0.37	0.40	0.40	-
TOP (%)	25	25	60	70	70	35	80	70	95	45	30	65	90	45

	Management				
	DOC	Claw	Angle	PAP	HS
EPD	21.0	0.42	0.52	1.19	0.47
ACC	0.38	0.31	0.31	0.31	0.33
TOP (%)	35	20	70	50	35

	Carcass				Angus-on-Dairy \$Values		\$Values					
	CW	MARB	RE	Fat	\$AxH	\$AxJ	\$M	\$W	\$F	\$G	\$B	\$C
EPD	38	0.75	0.60	-0.002	106	61	49	63	83	59	141	232
ACC	0.43	0.40	0.39	0.36	-	-	-	-	-	-	-	-
TOP (%)	65	30	45	30	40	55	80	35	60	25	45	55

BURLEY

000AN00053



Informações Gerais

Nome

SCHIEFELBEIN BURLEY 9090

Registro EUA

20036384

Registro BRA

246756

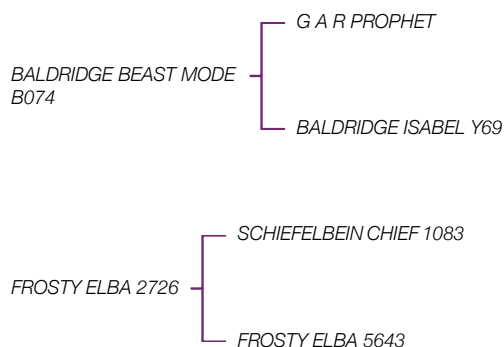
Nasc

18/08/2020

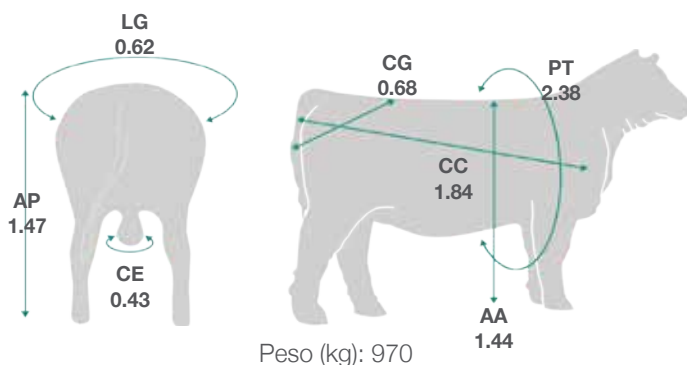
PROP

GENEX COOPERATIVE, SHAWANO WI

Pedigree



Medidas



PRODUÇÃO		DEP	AC (%)
FPD	TOP 4%	14	36
PN	TOP 10%	-1,20	56
PD	TOP 10%	84	48
PANO	TOP 10%	145	40
MDR	TOP 30%	0,28	32
ALT	TOP 10%	1	47
CE	TOP 75%	0,53	42

CARCAÇA		DEP	AC (%)
PC	TOP 40%	54	42
MARM	TOP 55%	0,61	37
AOL	TOP 55%	0,62	37
	TOP 55%	0,02	33

ÍNDICES		DEP
\$M	TOP 70%	58
\$DESM	TOP 10%	76
\$CONF	TOP 50%	86
\$QUAL CARC	TOP 50%	51
\$VALOR CARNE	TOP 55%	137
\$COMBINADO	TOP 60%	236

GULFPORT

000AN00038



Informações Gerais

Nome

EXAR GULFPORT 0735B

Regis ro EUA

19728845

Regis ro BRA

242339

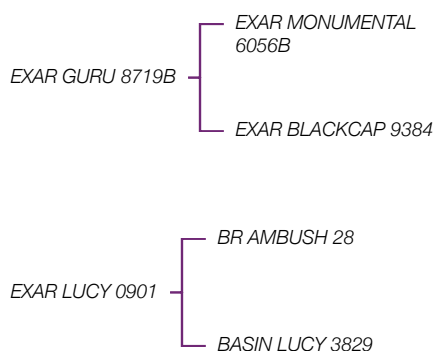
Nasc

26/03/2020

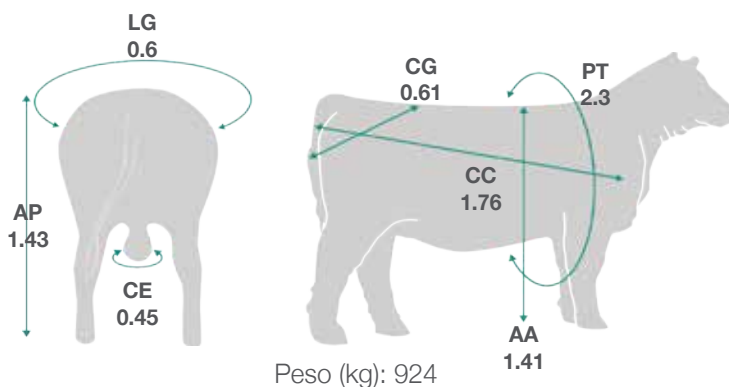
PROP

GENEX BRASIL

Pedigree



Medidas



PRODUÇÃO	DEP	AC (%)
FPD TOP 10%	12	37
PN TOP 65%	1,70	54
PD TOP 4%	87	46
PANO TOP 5%	149	42
GMDR TOP 10%	0,32	32
ALT TOP 15%	0,90	47
CE TOP 40%	1,03	46

CARÇAÇA	DEP	AC (%)
PC TOP 4%	76	42
MARM TOP 20%	1,02	39
AOL TOP 65%	0,56	38
G TOP 45%	0,01	35

ÍNDICES

ÍNDICES	DEP
\$M TOP 95%	43
\$DESM TOP 10%	77
\$CONF TOP 3%	121
\$QUAL CARC TOP 15%	71
\$VALOR CARNE TOP 5%	192
\$COMBINADO TOP 15%	292



COLLATERAL

COLLATERAL
 001AR00981 - 736391
 4534315 | DOB 12/17/2020

PEDIGREE



BULL INFORMATION

Birth Weight (lbs)	69
205 Day Weight (lbs)	794
365 Day Weight (lbs)	1174
Yearling Frame	5.5
Scrotal	38.5 cm. @ 17 mos.

EPDS

Red Angus Association of America - 1/2024

	ProS	HB	GM	CED	BW	WW	YW	ADG	DMI	Milk	ME	HPG	CEM	STAY	MARB	YG	CW	REA	Fat
EPD	108.00	58.00	50.00	16	-3.5	63	102	0.24	1.75	33	6	10.0	10	15	0.54	0.05	30	0.29	0.020
ACC	-	-	-	0.43	0.46	0.46	0.46	0.44	0.14	0.15	0.08	0.08	0.24	0.30	0.37	0.30	0.40	0.35	0.32
TOP (%)	30	45	30	15	25	45	45	45	75	5	60	70	10	50	30	40	30	25	45



JERINGAS PREMIUM Y ACCURUS





MALBEC

MALBEC

001AR00971 - 712128

3721545 | DOB 01/17/2016

PEDIGREE

RED U-2 RECKONING 149A	RED U-2 RECON 192Y
	RED U-2 ANEXA 271Y
RED U-2 MABEL 60A	RED MINBURN COPENHAGEN 3Y
	RED U-2 MABEL 7061T

BULL INFORMATION

Birth Weight (lbs)	60
205 Day Weight (lbs)	812
Yearling Frame	5.0
Scrotal	42.0 cm. @ 15 mos.

EPDS

Red Angus Association of America - 1/2024

	ProS	HB	GM	CED	BW	WW	YW	ADG	DMI	Milk	ME	HPG	CEM	STAY	MARB	YG	CW	REA	Fat
EPD	100.00	92.00	8.00	16	-4.0	55	79	0.15	1.18	31	-3	9.0	12	19	0.30	-0.09	4	0.35	0.010
ACC	-	-	-	0.72	0.87	0.87	0.87	0.80	0.25	0.61	0.32	0.50	0.55	0.44	0.48	0.40	0.53	0.48	0.42
TOP (%)	40	4	90	15	20	75	85	90	25	10	20	80	1	10	70	10	95	20	25



PAPALOTLA
SEMILLAS

Transformando tu siembra en éxito





MG Sire: HIRASHIGETAYASU J2351

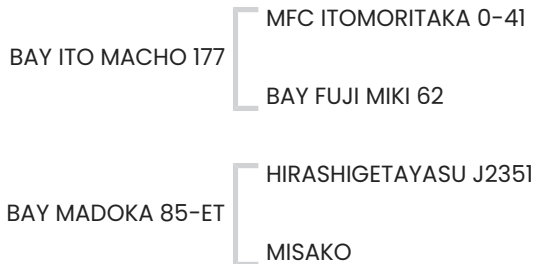
ZILVINIUS

ZILVINIUS

001KB00004 - 746099

FB80051 | DOB 03/01/2022

PEDIGREE



BULL INFORMATION

Birth Weight (lbs)	72
Coat Color	Black
Horned/Polled Status	Horned

EPDS

American Wagyu Association - 11/2023

	BW	WW	YW	MILK	TM
EPD	0.20	4.00	6.00	-1.00	1.00



Salud Animal



MSD

Salud Animal

HEPATOXAN

Antitoxico Potente

- Amplio espectro de acción - multiespecies
- Tres vías de aplicación
- Alta concentración de cafeína





Madame Lynch 293, Asunción



+595 21 515 944
+595 985 875511



genetica@covepa.com.py

GENEX™

Distribuidor exclusivo

COVEPA

MEJORES SOLUCIONES EN BUENA COMPAÑÍA